

ALKAMIRR
HEALING
&
RE-EDUCATION
CENTRE

ADVANCED LIFE KINETICS
AND MEMORY INTUITED
REGENERATIVE RESEARCH

DESIGNER
BRIAN JOHN VALE

ALKAMIRR CENTRE

ADVANCED LIFE KINETICS AND MEMORY INTUITED REGENERATIVE RESEARCH
 “I AM THAT I CHOOSE TO BE”

What is Vibrational Therapy? Everything formed by Atoms has a particular frequency, which is its energy signature, or vibrational marker. Therefore, all pharmaceutical drugs, chemotherapies, radiation therapies, and natural herbal remedies, use a particular frequency to fulfil their purpose. Purposed Thought, or the frequency of the Atoms, is what determines the result. However, all Life-forms have individual energy signatures. Therefore, a remedy will only work harmoniously on a particular signature that is compatible with the frequency of that remedy, otherwise there will be side effects. What if there was a Master frequency, or Master Genetic Crystal, that was the common denominator of a particular Common Logic reality.

A Common Logic reality is an infinite number of unique signatures, which are Life-forms, sharing a symbiotic environment. A Master Genetic Crystal is what keeps all of those Life-forms interconnected. This means that they are subject to Common Laws i.e. gravity, density, or a need to be sustained by consuming energy. Those Laws can have a variable influence upon the Life-forms within that Common Logic reality. However, they are all regulated in some way or another.

If we could access the Master Genetic Crystal in question, would it be possible to neutralise all interference that causes imbalance within our systems? How would we access and utilise that Master frequency?

When Atoms form compounds, they develop Traits that alter their original signature. A Harmonic forms when two or more signatures blend harmoniously. If two identical Atoms bond then they are not subject to reactance, and they form a Harmonic of the individual tone. It would be an octave. When more than two Atoms bond, the original frequency changes according to the number of Atoms. If two different Atoms bond, then they are subject to reactance, and therefore one can become dominant, while the other becomes subordinate. Reactance is the potential to be influenced.

Entrainment occurs when a powerful influence changes the frequency of a signature or signatures. Therefore, the signatures vibrate at the same frequency of the influence. If we could create a powerful and harmonious entrainment, then all subordinate frequencies would vibrate at the same frequency. The period of entrainment can be short lived, or long term, dependent upon the length of exposure, or the strength of the influence. This is why energy healers can have apparent success, but when the patient is no longer under their influence, they return to the previous state of disorder. However, if the Master Genetic Crystal is enhanced, which means that its signature is amplified, then the healing becomes permanent.

In the Human form, the Pineal Gland represents the Master Genetic Crystal. It determines the Time span from Thought to realisation. It is the Caretaker Crystal of our Symbiotic Consciousness. This state of Consciousness can be influenced by other states to perform different functions.

In the ALKAMIRR centre, an Instinctual Freetone (Form Regulation Endemically Expressed - Tectonics Orchestrated Necromantic Evolution) is the Master Genetic Crystal used as the core of the Crystal Transponders. Each building has different Actons attached to that Crystal. The Healing building uses the Intuitive Formalisation Actons to determine the function of the Master Crystal. The Re-education building uses the Terminal Contestation Actons to determine the function of the Master Crystal. The Caretaker building uses Christ Actons, or Christ Infatuation Actons, to determine the functions of the Master Crystal. The attached Acton Crystals have different frequencies that create the influence.

The Master Crystals are also influenced by the Generating capsules. Each Generating capsule has a different design, and metallic alloy frequency. These buildings were designed to influence the Pineal Gland, and other regulatory functions, for Healing and Re-education purposes.

Healing And Re-education Centre

STAR GATE (Selector)

Dimensional Doorway: Incorporating Transponder-Transceiver.

Self Teaching And Rejuvenation - **STAR**

Guise Actuated Transmutation Eternaliser - **GATE**

This Circuit incorporates Earth Emissions and Solar Transmissions through a Crystalline Transponder. The Master Crystal is formed from 92 Icosahedron Crystals, and 12 Inverted Dodecahedron Crystals. An Icosidodecahedron Core is created, and this Core is filled with solid Graphite. The complete Crystal is encapsulated within a Gold/Copper/Silver/Iron alloy Generating capsule. This outer assembly is connected above and below to a Transmission Organiser via Aluminium Tubes and Copper Rods (Solid). The Transmission Organiser is made up of 3 irregular Hexagonal Rings (Aluminium alloy pipe) connecting top and bottom. This forms a skeletal double-terminating Hexagonal Prism. The base apex connects to a Vibrational Interpreter via a copper tube penetrating the Earth approximately 13 metres in depth. The Vibrational Interpreter is made from Copper alloy rod, which is Geometrically structured into a Hexagonal Grid. This Grid has 3 layers:

1. 96 Equilateral Triangles
2. 96 Interconnecting Circles
3. 37 Hexagons

The Crystal connects to this Organiser by Copper rods attached to the base and top of the Crystal arrangement. No Aerial is necessary for this structure. The entire building is in itself an aerial.

There is a Skylight Dome or Light separator approximately 4 metres in diameter for the main buildings, and 3m for the Caretaker building. This Light separator has 6 individual Filters i.e. 2 Red filters of varying shades, 1 Indigo, 1 Blue, 1 Green, and 1 Violet. The Wavelengths of the allowable Light are:

1. 4.00
2. 4.22
3. 5.01
4. 5.34
5. 6.33
6. 6.68

All wavelengths are to be multiplied by 10^{-7} .

These filters are in order of placement looking from outside in. They are in clockwise order. The junction between the first and the second filter faces North.

Sitting on the Vibrational Interpreter is a Spar Pool that acts as a dampener and Vortex Neutraliser (Balancer or Stabiliser). The Generating capsules around the Crystal Transponders are Gold-Copper-Silver-Iron alloy.

Crystal Transponder-Transceiver: Master Genetic Crystal

The 3 Generating capsules surrounding the Crystal Transponders form 5 specific crystalline Patterns. The Healing Generating capsule combines the Multiple 6 Icosahedrons of Will, which forms Trust-based Faith, with the multiple 6 Icosidodecahedrons of Intuition, which forms the Faith-related Inspirational and Aspirational Dreamstate. This creates 222 points or junctions.

The Re-education Generating capsule combines the multiple 7 Icosahedrons of Will, Altruistic Will, with the multiple 7 Icosidodecahedrons of Intuition, Social Justice, which forms the Altruistic-related Social Justice Dreamstate. This also creates 222 points or junctions.

The Caretaker Generating capsule combines the multiple 6 Icosahedrons of Trust-based Will or Faith, the multiple 7 Icosahedrons of Altruistic Will, and the multiple 11 Icosahedrons of Unity Will. This forms 252 points or junctions, and becomes Sanctity Will.

The Energy of the Generating Capsules surrounding the Crystal Transponders is absorbed and stabilised by the Graphite Core of the Transponder. The Crystals are now fully functional.

There are two Octagon Accommodation buildings with SOUL STAR Crystal Vortex Accumulators placed in the central room of the top floor of the buildings. The Crystals are formed by eight twinned Common Sense Tetrahedrons connected to a common Vortex-centre. They form Hexagram bases, have a common apex, and are made from Blue quartz.

The Crystals within the two buildings have the same Generating capsule design. It combines the multiple 5 Octahedrons of Christ-based Nature, the multiple 5 Cubes of Christ-based Common Logic, the multiple 5 Cuboctahedrons of Christ-based Self-awareness, which is Unity-awareness, the multiple 5 Reason designs of Christ-based Reason, with the multiple 5 Passion designs of Christ-based Passion. This combination forms a fusion of 98 Octahedrons of Nature, and has 266 points or junctions. It becomes the Nature of a Self-assessing SOUL STAR.

The Healing and Re-education Centre has two Systems operating. Firstly, the entire Complex is multifunctional. It is Instructive and Constructive. One System Rejuvenates, and the other Transforms and Re-educates.

CARETAKER = 37 = SPIRIT = GUIDANCE

The Sanctity System within the Caretaker building has full access to the Master Crystal. The Healing and Re-education buildings are placed within the Yin and Yang Symbol, of which the entire Complex is in the Design of.

The Complete function of this Centre can only be accessed by Evolutionary progress. As we learn more about “Pure Potential”, and become more responsible for our Thought processes, we then access more of our Completeness. Knowledge without a responsible Attitude can be destructive on a Universal level.

Generating capsule Composition

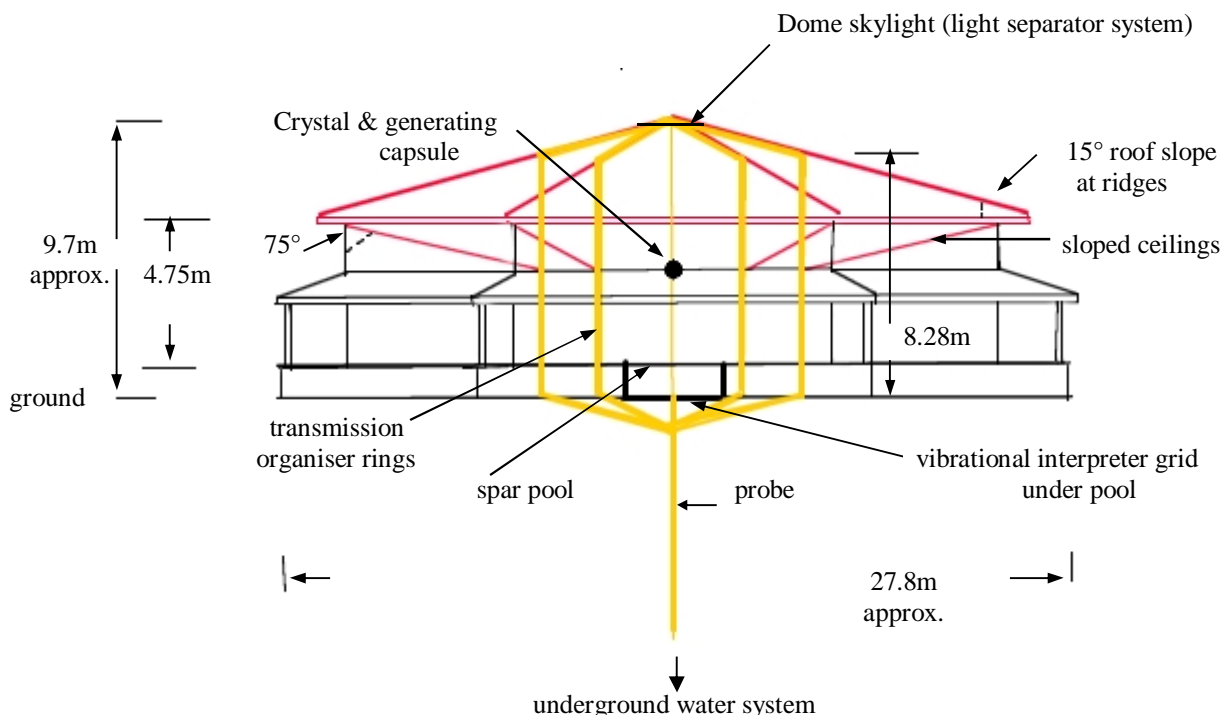
There are 4 unique Compositions for the 5 Generating Capsules. They are an alloy of Gold-Copper-Silver-Iron. The SOUL STAR Generating capsules have a ratio of: GOLD = 31.48% - COPPER 28.233333% - SILVER 21.6% - IRON 18.6866667%. The ratios for the other Generating capsules are stated below.

Healing System	%	Re-education System	%	Caretaker System	%
COPPER	37	GOLD	43.64	COPPER	31.7
GOLD	33.8	SILVER	26	SILVER	26.5
IRON	16.9	COPPER	16	IRON	24.8
SILVER	12.3	IRON	14.36	GOLD	17

The Frequency generated by the Capsules determines the Vibratory Commands for specific purposes. Access is controlled by this means. Also, the Colour coding is effected in this way.

BUILDING CONSTRUCTED AS A RECEIVER/TRANSMITTER

2 Buildings are constructed by this method. The Caretaker building has different construction, but similar Central Room Design with Crystal.



These Buildings are Hexagonal. They have all-metal framework, which is mostly aluminium. The external walls are full brick, and the Central Room walls are aluminium frame internal with brick surrounds. The brick surrounds only rise to the height of the External Room's wall height.

Colour Coding

The Light Separator Systems for the Structural Bias are created by simple Geometric Formulas. Fibonacci Patterns are used in conjunction with the Key Signature Design, and the Chordal Adjustment Design. The Light Separator Panels are fused Vitreous Quartz. The Wavelength & Frequency of the selected Pattern of Tones is listed ahead.

HEALING SYSTEM

Tone	Colour	Wavelength x 10 ⁻⁷ m	Frequency Hz x 10 ¹⁴	Chords & Keys
F#	Red	7.07	4.2368591	Light Body
C	Blue	5.01	5.981448142	Fruit Bowl
D	Indigo	4.45	6.729129159	
A b	Red/Orange	6.33	4.735313112	
B b	Yellow	5.66	5.296687014	Kite
E	Violet	4.00	7.476810177	Door Key

There are Rectangle Keys (Door), Fruit Bowl Keys, Light Body Frequencies, and Kite Keys making up the above Design, or Geometrical Harmonic Pattern. It is also a Soul Star Pattern of 6 Notes.

RE-EDUCATION SYSTEM

Tone	Colour	Wavelength x 10 ⁻⁷ m	Frequency Hz x 10 ¹⁴	Chords & Keys
G	Red	6.68	4.486086106	Door Key
C#	Blue	4.71	6.355288651	Lemurian Flower Cup
F#	Red	7.07	4.2368591	
D	Indigo	4.45	6.729129159	
A	Orange	6.01	4.98454011879264	
E b	Indigo/Violet	4.22	7.102969668	Elemental

The Re-education Pattern has within it a Lemurian Flower Cup Chord, a Door Key, and an Elemental.

CARETAKER SYSTEM

Tone	Colour	Wave length x 10 ⁻⁷ m	Frequency Hz x 10 ¹⁴	Chords & Keys
E b	Indigo/Violet	4.22	7.102969668	Light Body
C	Blue	5.01	5.981448142	
B	Green	5.34	5.607607633	Vase Key
A b	Red/Orange	6.33	4.735313112	
G	Red	6.68	4.486086106	
E	Violet	4.00	7.476810177	Lemurian Flower Cup

The Caretaker Colour Coding has access to or utilises 3 Lemurian Flower Cup Chords, a Soul Star, and 2 Light Body Frequencies. There are 11 Tones or colours represented in the 3 Buildings. The one not represented by a colour Panel is F. This note is an Infrared or an Ultraviolet Frequency as stated by the given Spectrum according to Fibonacci ratios. The Vitreous Quartz Panels themselves transmit those Frequencies, which means that all Tones are represented.

The Healing System Colour Coding has access to or utilises six SET Chords, or Sentient Entity Transmutation Personified Transients. The Six SET Chords are shown below.

1		2		3		4		5		6	
C	Blue	D	Indigo	E	Violet	F#	Red	A b	Red/Orange	B b	Yellow
D	Indigo	E	Violet	F#	Red	A b	Red/Orange	B b	Yellow	C	Blue
E	Violet	F#	Red	A b	Red/Orange	B b	Yellow	C	Blue	D	Indigo
A b	Red/Orange	B b	Yellow	C	Blue	D	Indigo	E	Violet	F#	Red

The Healing System Door Key is the Star signature (Departure coordinates) **F# - Bb - E - C**. This System utilises 2 Light Body Frequencies, 3 Door Keys, 6 Fruit Bowl Chords, and 6 Kite Keys in its functional Processes. It also has the Transmutation Accelerator in its coding (Master Vibrational Sequence). It also has Cosmic Crystal Formulations.

The Re-education System Colour Coding has access to or utilises STAR Chord, SUN Chord, and GOD Chord Personified Transients.

STAR		GOD		SUN	
C#	Blue	D	Indigo	E b	Indigo/Violet
G	Red	A	Orange	F#	Red
A	Orange	E b	Indigo/Violet	A	Orange
D	Indigo	G	Red	C#	Blue

The Re-education System also utilises a Lemurian Flower Cup Chord and a Door Key. This Door Key is the Star Signature (Conception Coordinates) **G - Eb - A - C#**.

Visible Spectrum

Frequency, Wavelength, and Colour

Using the PHI Ratio Frequency of **498454011879264 Hz** as the Tone of “A” these Frequencies were determined:

Frequency Hz x 10 ¹⁴	Wavelength x 10 ⁻⁷ m	Colour	Note
3.987632094	7.51	Infra-Red	F
4.2368591	7.07	Red	F#
4.486086106	6.68	Red	G
4.735313112	6.33	Red/Orange	A b
4.98454011879264	6.01	Orange	A
5.296687014	5.66	Yellow	B b
5.607607633	5.34	Green	B
5.981448142	5.01	Blue	C
6.355288651	4.71	Blue	C#
6.729129159	4.45	Indigo	D
7.102969668	4.22	Indigo/Violet	E b
7.476810177	4.00	Violet	E
7.975264189	3.75	Ultraviolet	F

These next Frequencies are documented Spectrum details based on General Knowledge for comparison only.

Frequency Hz x 10 ¹⁴	Wavelength x 10 ⁻⁷ m	Colour	Tone
4.29 – 4.69	7.00 – 6.50	Red	G – A
5.00	6.00	Orange	A - B b
5.16	5.80	Yellow	B b
5.45	5.50	Green	B
5.99	5.00	Blue (cyan)	C#
6.66	4.50	Blue	D
7.50	4.00	Violet	E - F

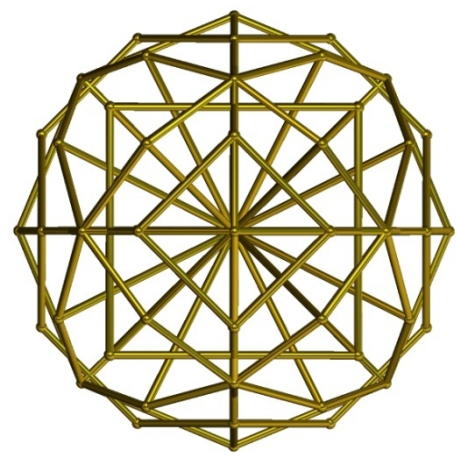
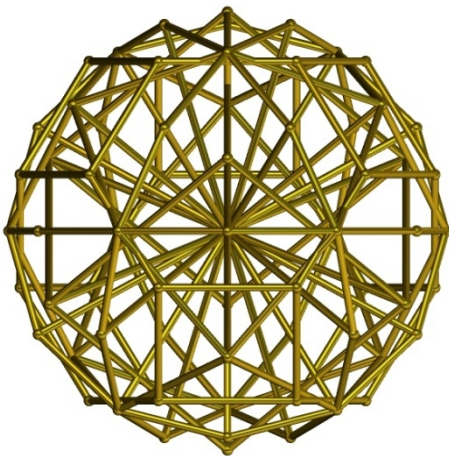
Structural Bias

The two main buildings form a continuous circuit. There are Concentric Hexagonal Loops that make up the Foundation Footings of the Buildings. The reinforcing within these footings is Copper alloy. One Hexagonal Loop is situated under the Central Room walls, and another under the Main wall frame (external) of the Building, and the third is under the Foundation wall of the concrete veranda.

The pier footings underneath those loops have a Geometric reinforcement, which fuses a Cuboctahedron, Octahedron, Star-tetrahedron, Reason, and Passion design. It forms a sphere of 74 points and is a construct of 22 Octahedrons of Nature. They are placed in the Prime Octahedron axis. The top apex of the Octahedron has a Copper alloy rod connecting to it and passing up through the pier to connect to the Aluminium alloy floor frame. A rod also connects to the bottom apex of the Octahedron and protrudes through the base of the Footing to form an Earth spike. Only one of the spheres within each Loop is earthed.

All other pier footings have the same Geometric sphere, placed in the Star-tetrahedron axis, with an Earth spike for each, and a connecting rod up through the pier and attached to the floor frames. The veranda and ramp reinforcing is galvanised steel and connects to an earth spike. All three Hexagonal Loops are Earthed. The Aluminium pipe forming the Transmission Organiser in the Central Room walls is insulated from the rest of the Building and earthed by the Copper alloy rod at its centre. This creates two separate entities within the One.

The Geometric Sphere under the foundation Loops, in the Octahedron axis, is shown below right. The Geometric Sphere under the central rooms, in the Star-tetrahedron axis, is shown below left.

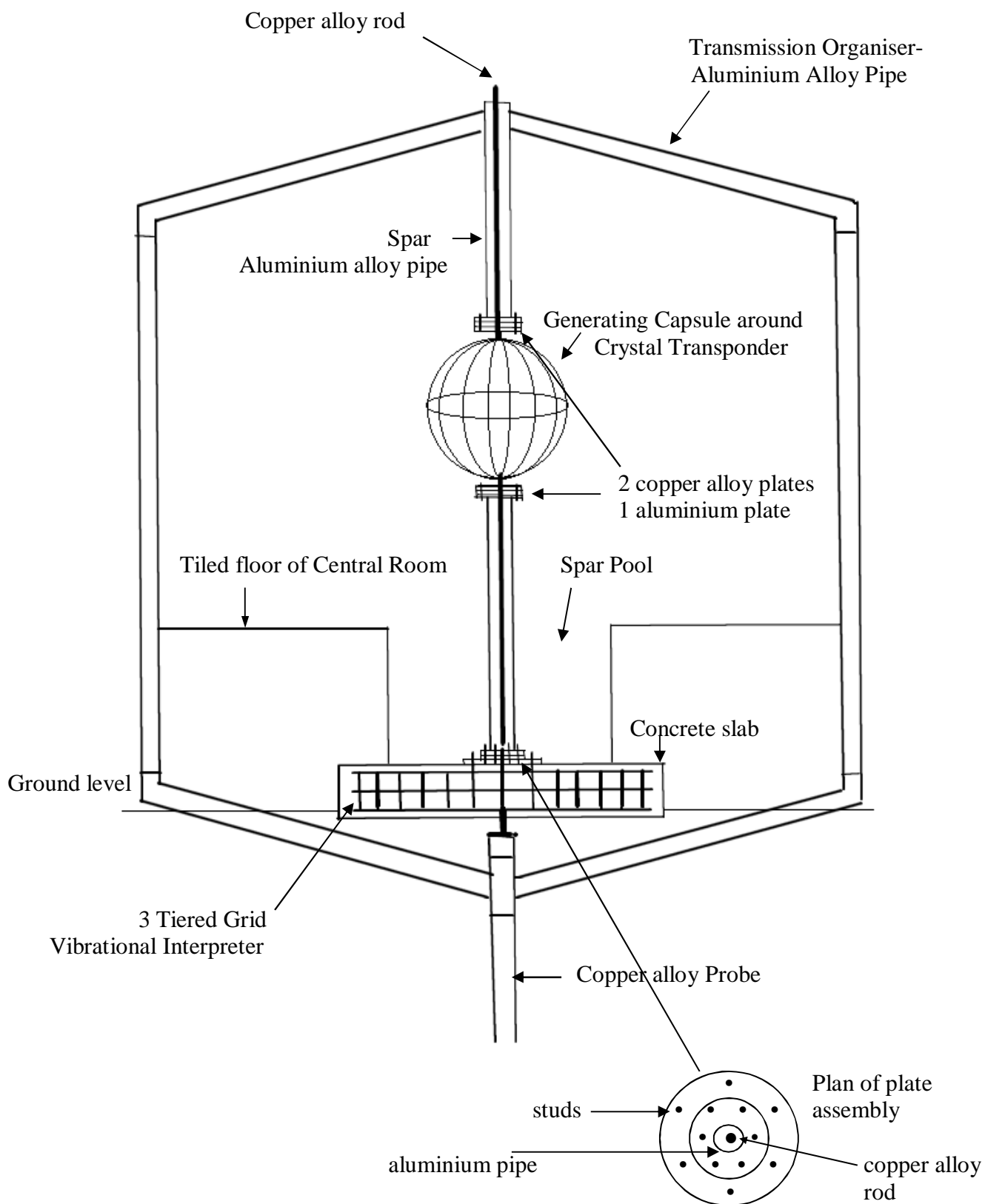


The base or lower layer of the three-tiered Grid underneath the Spar Pool is the Equilateral Triangle Formation. The middle layer is the Interconnecting Circle or Loop Grid. The top layer is the Hexagon Grid. The base layer connects to the middle layer by vertical connectors welded to the junction point of each Equilateral Triangle. Those connectors then join to each junction of 6 circles on the Circle Grid. The top layer then joins to the Circle Grid by connecting-rods welded to each Hexagon Point and then to each junction of 3 circles. The Centre Hexagon of the top layer then protrudes through the Spar Pool base by welding 6 studs to the Points. Those studs connect to the Plate assembly of the Spar pole.

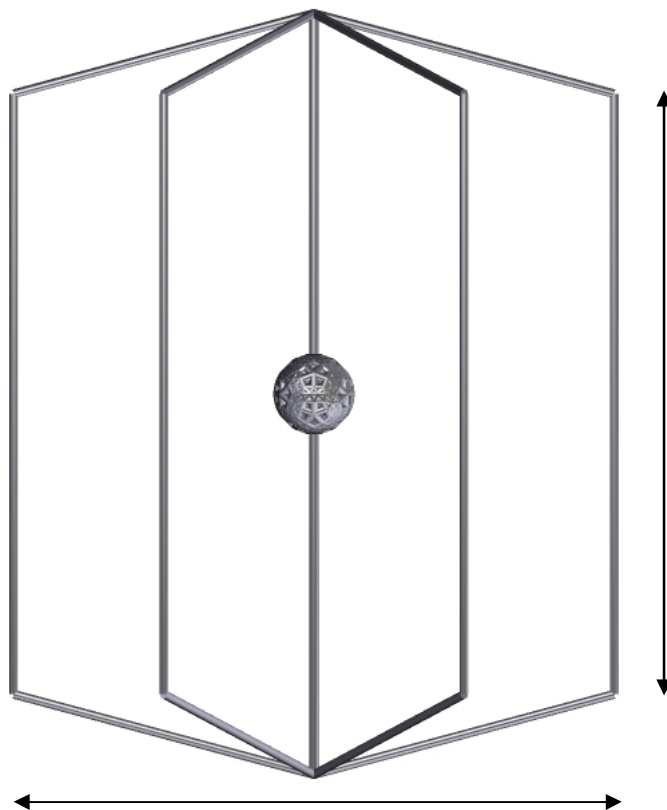
The Probe connects to the base layer Grid at the Centre Point (junction of 6 Equilateral Triangles) by a similar diameter rod to the Grid itself. The rod welds to the top of the Probe, which is made from Copper alloy pipe capped at the top.

The concrete slab under the Spar Pool is made with River sand and actual Blue metal, which is crushed Basalt. The Probe is an alloy of Copper, Silver, Silicon, and Zinc. The Vibrational Interpreter Grid is made from an alloy rod of Copper, Silver, and Silicon. The Aluminium pipe for the Transmission Organiser is made from Marine grade Aluminium, which is an alloy. The Generating Capsules are made from an alloy of Gold, Copper, Silver, and Iron. The rod passing through the Spar columns is made from Copper, Silver, and Silicon alloy.

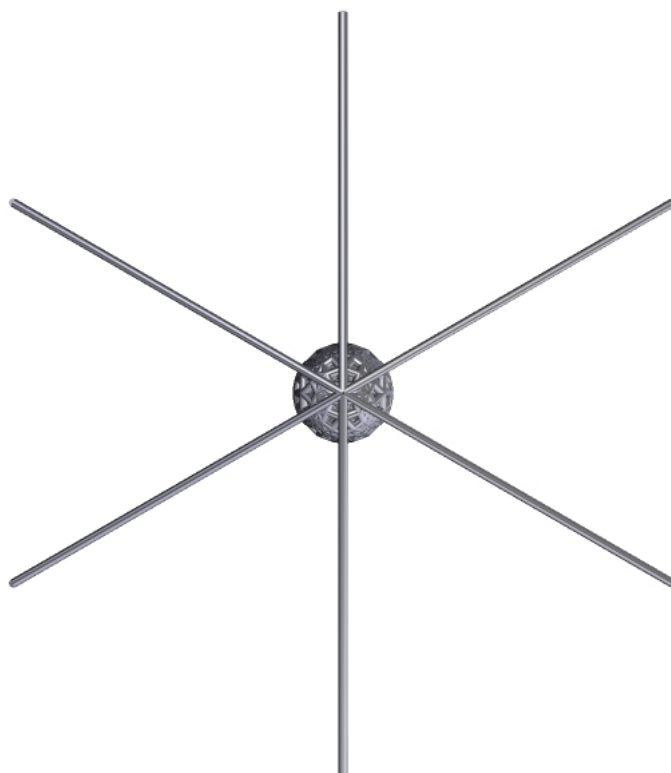
Central Room Construction Principals



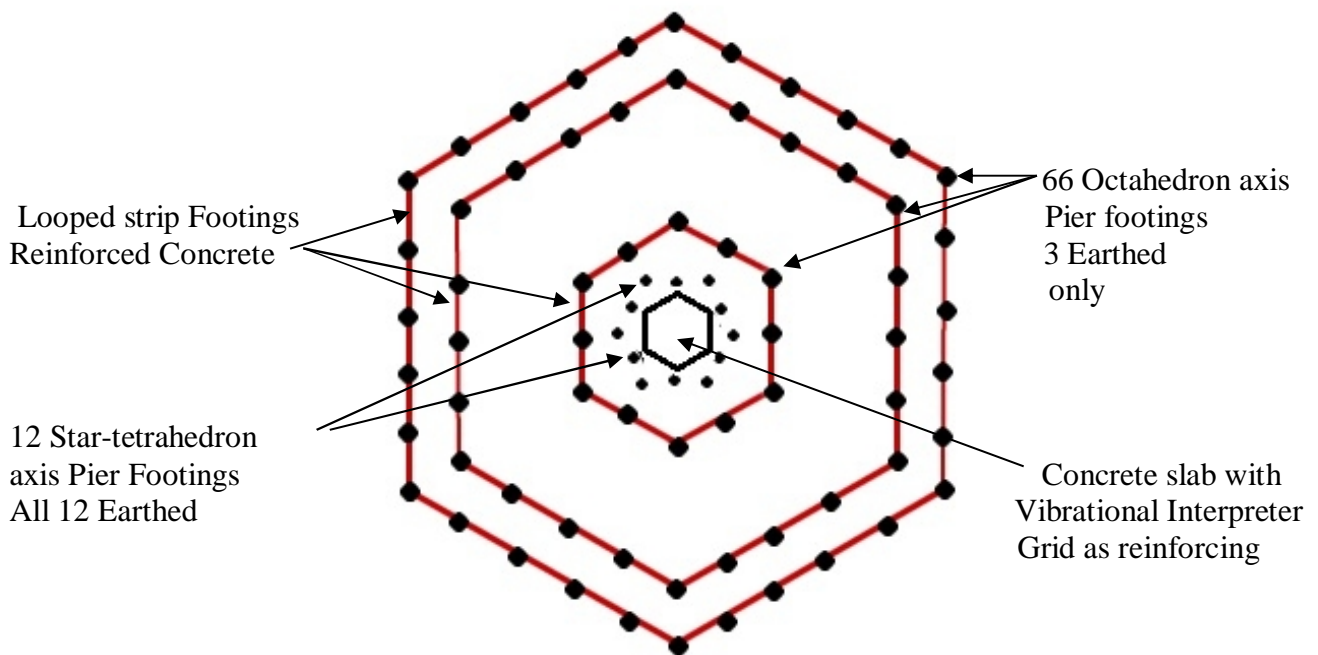
This shows the Transmission Organiser and Crystal Transponder in the correct scale. The centre Copper alloy rod that passes through the Spar pole is shown connecting to the Transponder. The height of the side is the same dimension as the diagonal width of the Organiser.



This shows the plan view of the Transmission Organiser.



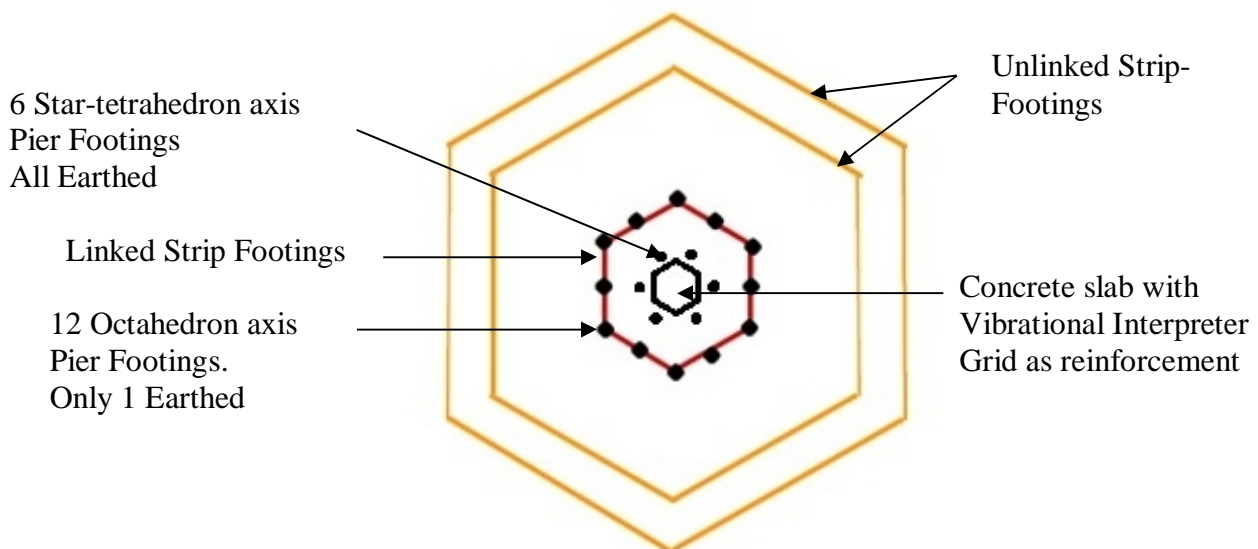
This Floor Plan (for Reinforcing) is for the two Main Buildings only.



3 Circuits and approximate Footing Placements shown above

The Caretaker Building

This Structure has a similar Central Room Construction, but the rest of the Building differs from the other two Buildings. There is only One Circuit or Loop Footing. It is under the walls of the Central Room. The Pier Footings in the Loop are the same as for the other two Buildings. The Piers that are not in the Loop Circuit are also the same as for the other Buildings.



This Building is the Central control Unit for the Complete System. Programming is achieved through this unit only. Limited access is necessary at this Time due to uncontrolled Thought Processes of many Individuals.

The other Strip Footings of this Building are not linked to Piers so they do not create a Loop or Circuit. Reinforcing in unlinked Strip Footings and concrete slabs other than Vibrational Interpreter grids are galvanised steel.

Exclusive Designation: Constructive and Instructive.

The 3 Buildings within this Complex have unique Crystals placed within their Individual Generating Capsules. They use the Master Crystal of 92 Icosahedrons made from clear quartz glass, and 12 inverted Dodecahedrons made from Obsidian, connected to an Icosidodecahedron Crystal made from Graphite.

The Healing building has 12 Intuitive Formalisation Actons, 12 Icosahedrons (blue quartz glass) connecting to an Icosidodecahedron Crystal made from Lapis Lazuli, attached to the Master Crystal. This Crystal uses the 222 point Faith-related Dreamstate Generating Capsule.

The Re-education building has 12 Terminal Contestation Actons, 12 Icosahedrons (red quartz glass) connecting to a Terminal Emulator Crystal made from Rose quartz. This Crystal uses the 222 point Altruistic-related Social Justice Dreamstate Generating Capsule.

The Caretaker Building has 12 Christ Actons, 12 Icosahedrons (blue quartz glass) connecting to a Christ design made from clear quartz glass, attached to the Master Crystal. This Crystal uses the 252 point Sanctity Generating Capsule.

All Generating Capsules are in the upright position having 2 opposite Points of the Prime Icosahedron connected to the Spar.

Graphite and Obsidian are mirror reflection Elementals e.g. in Numerological terms the letters of the words add up to mirrored numbers in Natural letter placement and Reduced terms.

(Reduced)
48
GRAPHITE
84
(Natural)

(Reduced)
37
OBSIDIAN
73
(Natural)

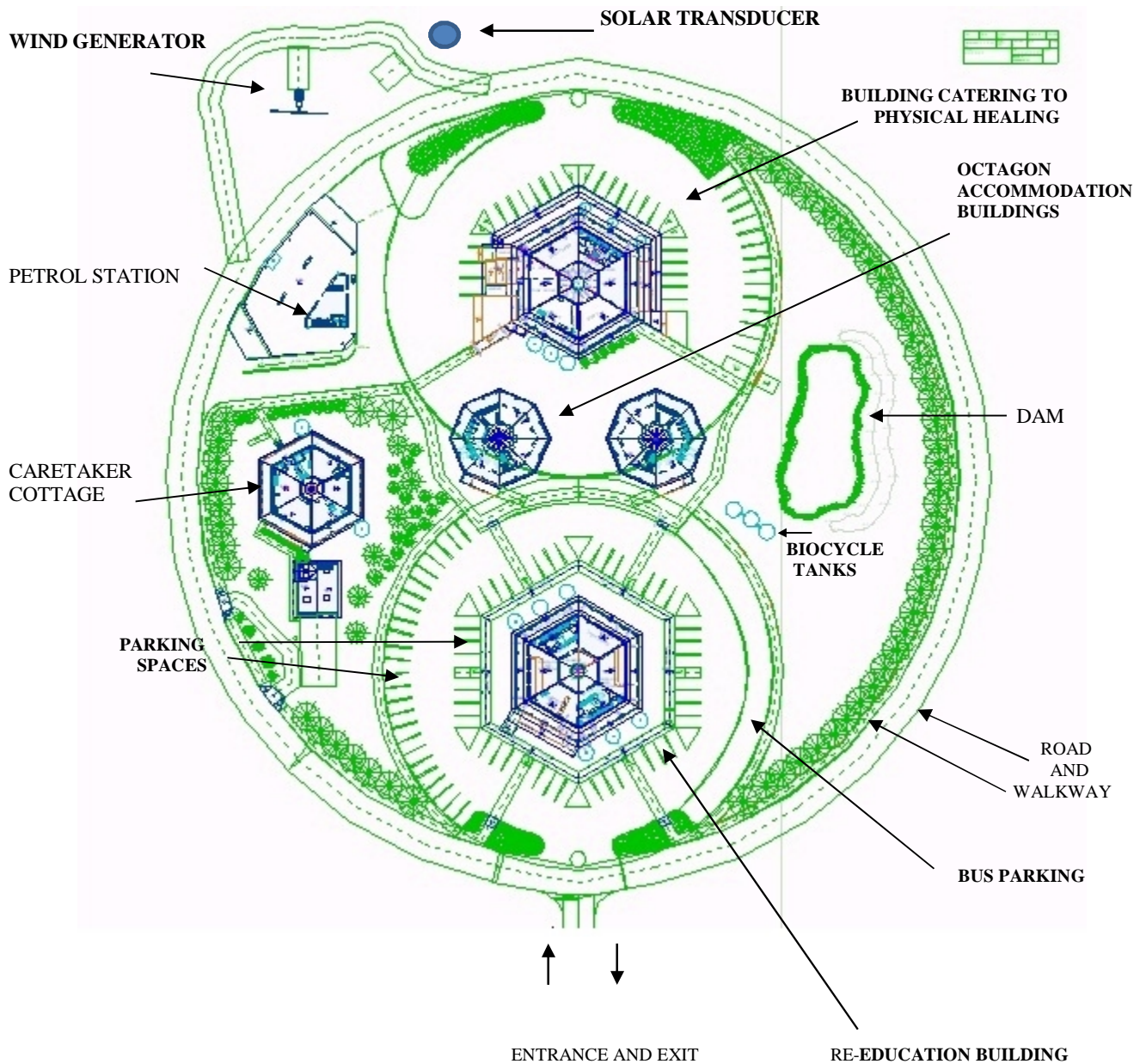
The **4** is Physically Constructive, and the **8** is to do with Judgement. The **3** is to do with Imagination, and the **7** is to do with Understanding or Self-Awareness. The 4 and the 8 when added together come to the number **12**, which reduces to the **3** of Imagination. The 3 and the 7 when added together come to **10**, which reduces to the number **1** of Leadership, Self-reliance, or Self-motivation.

The Graphite Icosidodecahedron has 12 Pentagonal Pyramids connecting to the 12 Pentagon Faces of its Design. This creates a large Icosahedron Structure. The Apexes of the Pentagonal Pyramids connect into the inverted Faces of the Obsidian Dodecahedron Crystals. The 12 Pentagonal Pyramids are made of Copper Pyrites. Copper is a Mirror Reflection Elemental, which also reduces to the number **1** of Leadership.

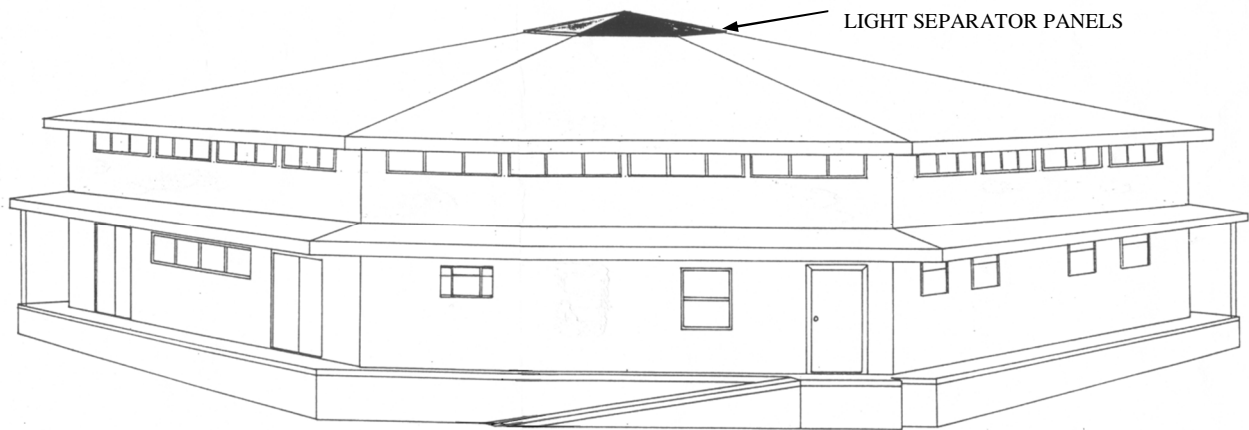
(Reduced) 37		(Reduced) 40		
COPPER	+	PYRITES	=	77 (Reduced)
73				
(Natural)				

77 is a Mirror Reflection Multiple, which does not reduce to a lower number. It has twice the Power of the **7**, which is Understanding, or Self-Awareness. The **7** becomes a multiple of **11** e.g. **7 x 11 = 77**. The number **11** does not reduce either but becomes twice the Power of the **1**. The **11** is a Paradigmical Protestant i.e. something that negates or goes against the normal Patterns or Theories, as in Methodology.

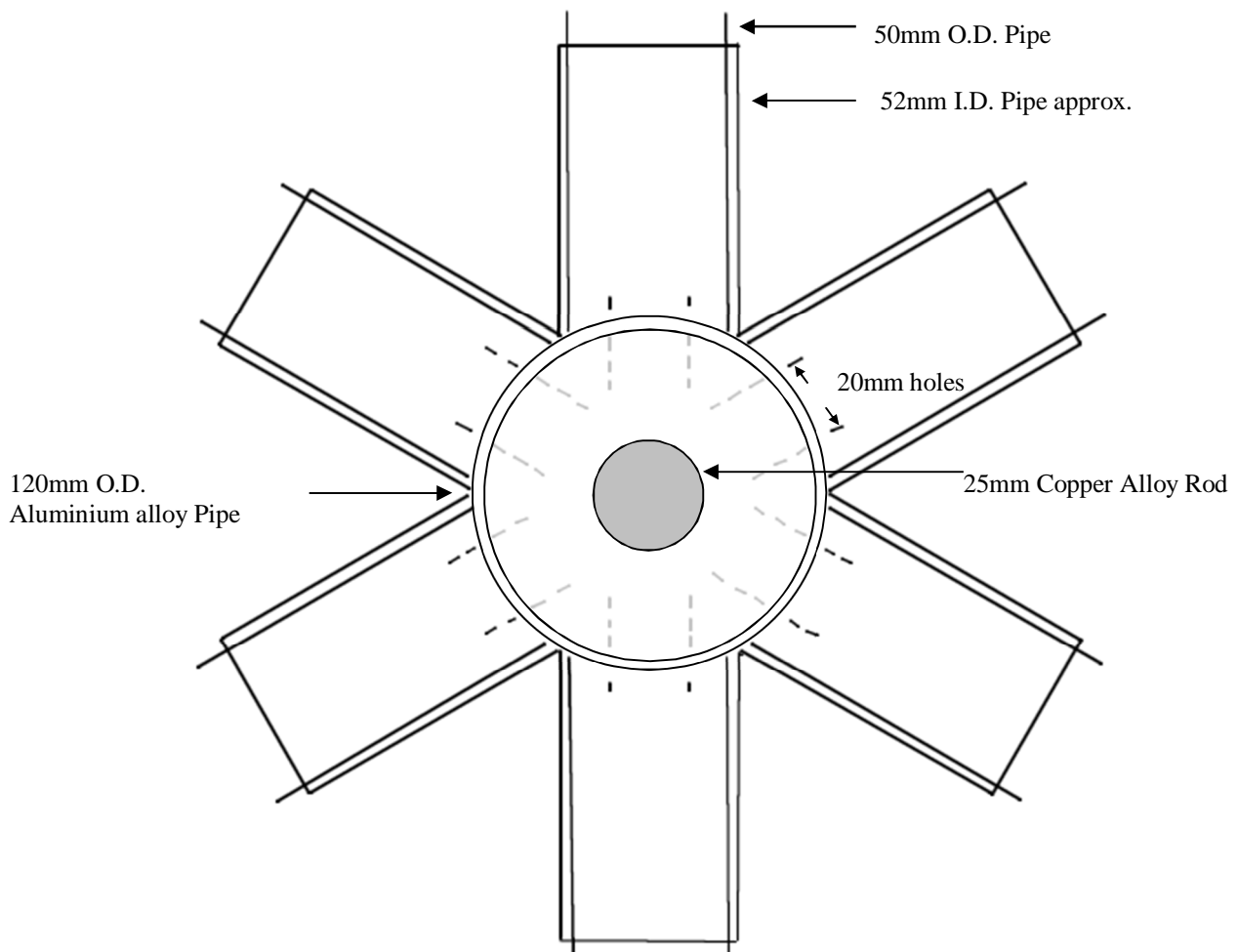
Instructive and Constructive: Eyes of G.O.D.
ALKAMIRR CENTRE: PLAN VIEW
 "I AM THAT I CHOOSE TO BE"



ELEVATED STRUCTURE OF MAIN BUILDINGS: RE-EDUCATION BUILDING.

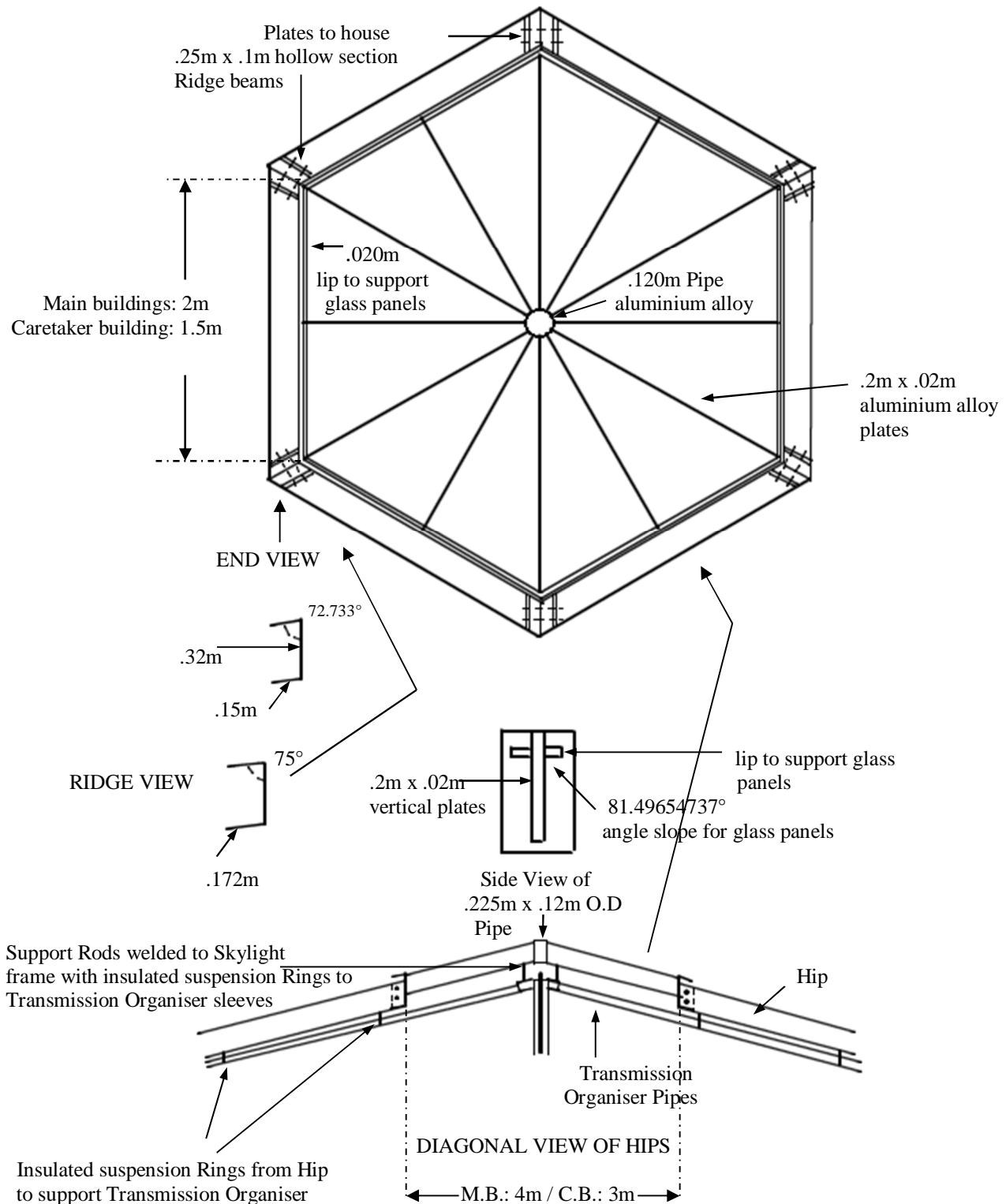


TRANSMISSION ORGANISER APEXES



The Top Apex is capped, with Copper Alloy Rod protruding through cap. Rod is sealed through cap. The bottom Apex has a Copper Alloy Probe passing through the 120mm Pipe sleeve. Circulation holes are drilled to allow movement of internal gases. Copper Alloy Rod protrudes through Top apex cap by 75mm only. The top Apex is the top of the Spar Pole. The bottom Apex has the sleeve arrangement sliding over Copper Alloy Probe and then to be Brazed.

Light Separator Skylight: PLAN VIEW.



Crystal Response

The 3 Buildings in direct association with this Healing and Re-education centre will have differing dimensions as far as the Crystal Transponder-Transceivers are concerned. The Crystal with the attached Intuitive Formalisation Actons will have a diameter of 686mm. This means that each Icosahedron Crystal will have an edge length of 40mm and a radius of 38mm. The Core

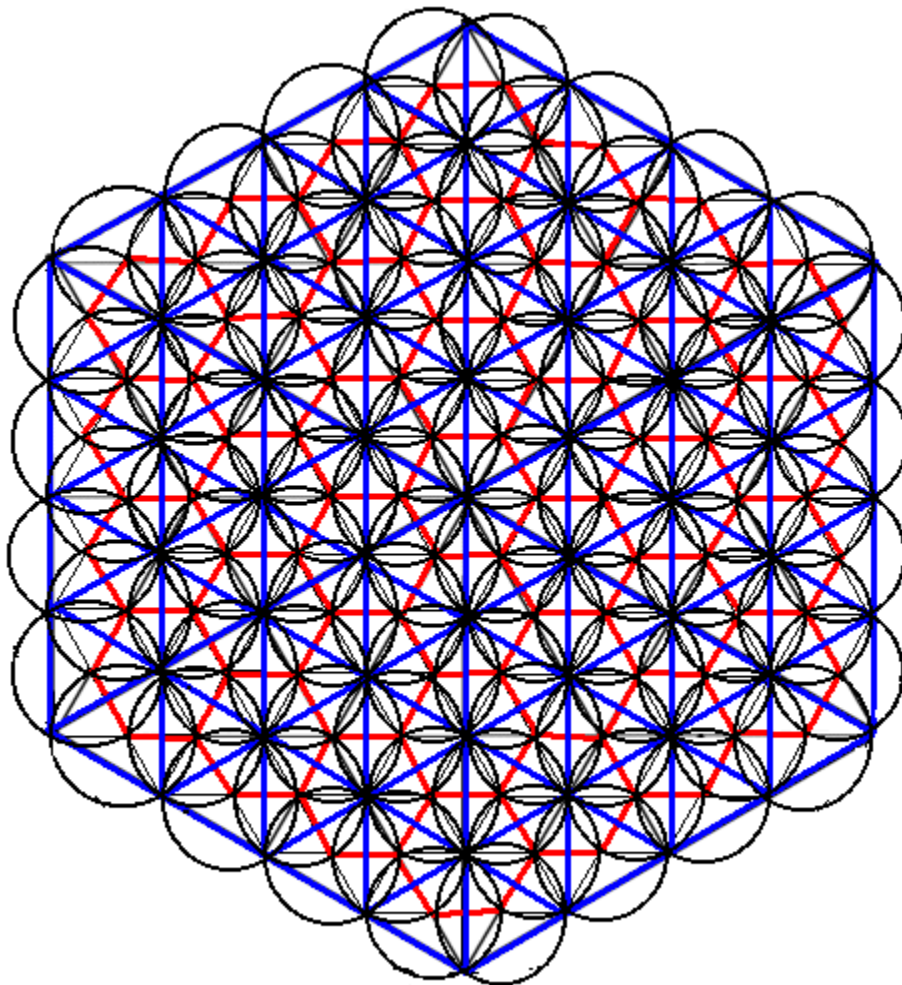
Icosidodecahedron within the Fundamental Freetone, made from Obsidian, and the Icosidodecahedrons of the Intuitive Formalisation Actons, will have a diameter of 129mm. The Dodecahedron Crystals will have a diameter of 112mm.

The Crystal with the attached Terminal Contestation Actons will also have a diameter of 686mm. The Terminal Emulator Crystals will have a diameter of 129mm, the same as the Icosidodecahedrons in the Intuitive Formalisation Actons. The Generating capsules of the two main buildings will have a diameter of 686mm, the same as the Crystals.

The Fundamental Freetone Crystal, of 92 Icosahedrons and 12 inverted Dodecahedrons, has a diameter of 400mm. Each Icosahedron has a radius of 38mm approx., and an edge length of 40mm. Each Dodecahedron has a radius of 56mm approx., and the same edge length as the Icosahedrons. The Sanctity Caretaker Crystal will have a diameter of 702mm. The Christ-base crystals of the Christ Actons will have a diameter of 136mm. The Sanctity Generating Capsule therefore has a diameter of 702mm, the same as the diameter of the Sanctity Caretaker Crystal.

The SOUL STAR Crystals in the Accommodation buildings will have a diameter of 500mm. Therefore, the SOUL STAR Generating capsules will have the same diameter.

FLOWER OF LIFE: 3 TIERED VIBRATIONAL INTERPRETER GRID.



Grid Construction Principles

The 3 layered Vibrational Interpreter Grid is within a concrete slab 250mm thick. The Grid is constructed from 10mm rod made from Copper-Silver-Silicon Alloy. The bottom Tier of the Grid is made from 96 Equilateral Triangles with an edge length of 416mm. The middle Grid is made from 96 interconnecting circles, 240.5mm radius for each circle. The Top Grid is made from 37 Hexagons with an edge length of 240.5mm for each Hexagon.

The Hexagon Grid has 6 studs welded to the centre Hexagon's points. These studs protrude through the bottom of the Fibreglass Pool to attach the Spar. The Hexagon studs are at a distance of 240.5mm centres. The diameter of the Hexagon being 481mm centres. The base plate of the Spar connection is circular and has a diameter of 513mm. The other two circular plates have a diameter of 200mm. The 513mm base plate has 6 studs welded to it to take the Spar Plates. All plates are 10mm thick. The 12mm studs welded to the Hexagon Grid will be a length of 100mm. The threaded section will be a length of 65mm. The 12mm studs welded to the base plate to take the Spar plates are 50mm long. The threaded section is 35mm long.

The Spar Pool must be 1.15m deep to the underneath surface of the Pool. It shall have a 90° flange approx. 100mm wide around the top of the Pool. The 1.15m measurement is to the underneath part of the flange down to the underneath surface of the base. All of these statistics are for the two Main Buildings only.

S.P.A.R.

Sentient Plasma Actuating Response

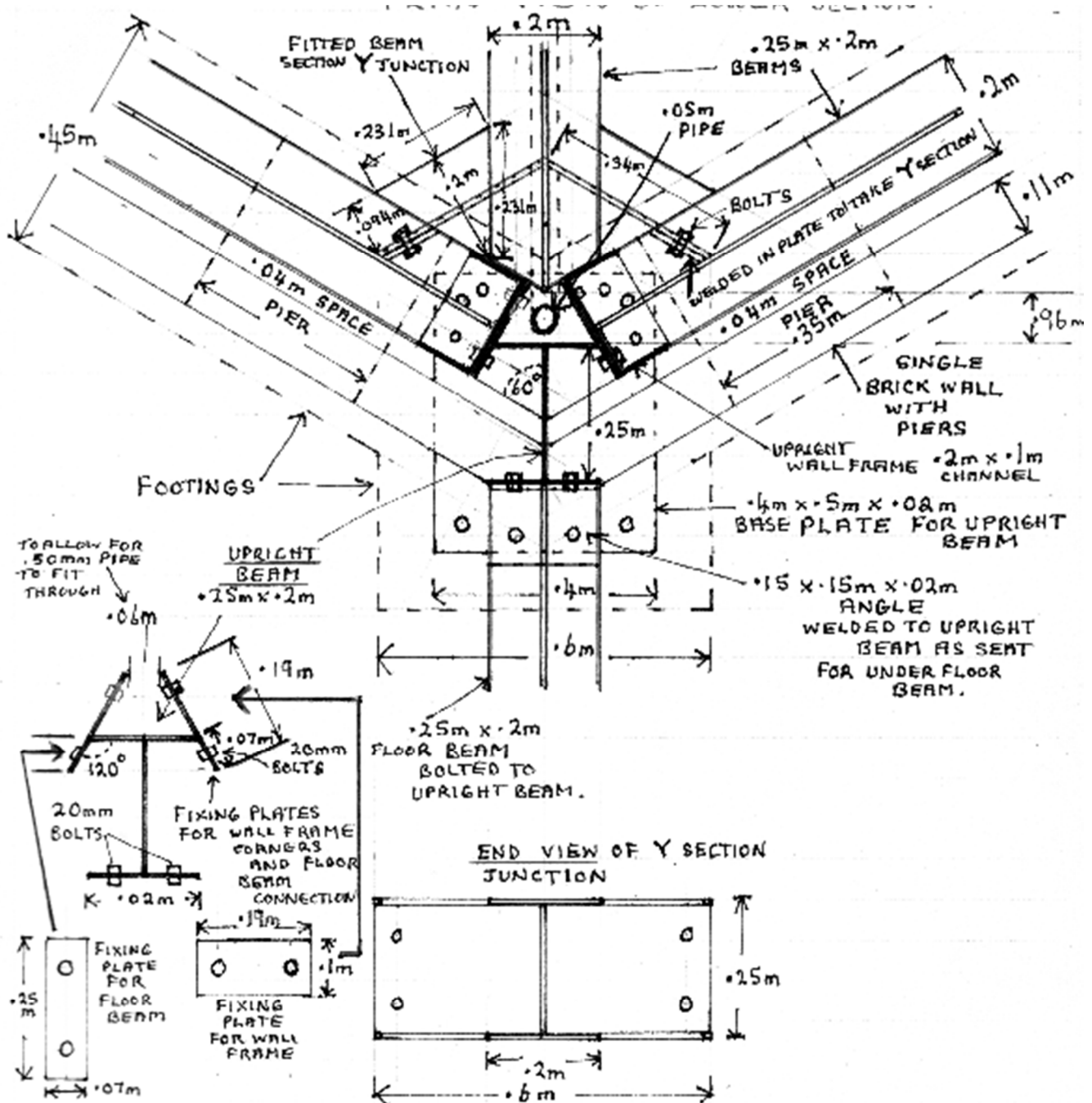
The Spar poles in the two main buildings will be the same length because the Generating capsules are the same diameter. Spar in one sense means stout Pole as in mast or main member of aeroplane wing carrying ribs. Another meaning is a form of Crystalline easily cleavable mineral. Both meanings are represented here. The Crystal is created from component crystals that when assembled would be classed as easily cleavable. The Pole carrying the Crystal is like a mast. It also carries the Generating Capsule that could be described as a Rib cage. These Ribs interconnect to form a shell or Capsule.

The words "Generating Capsule" are ambiguous to say the least. Generating, in this instance, means to evolve or reproduce. Evolve means set forth in due sequence, or develop by natural process from rudimentary to more highly organised condition. Capsule means seed-case or envelope.

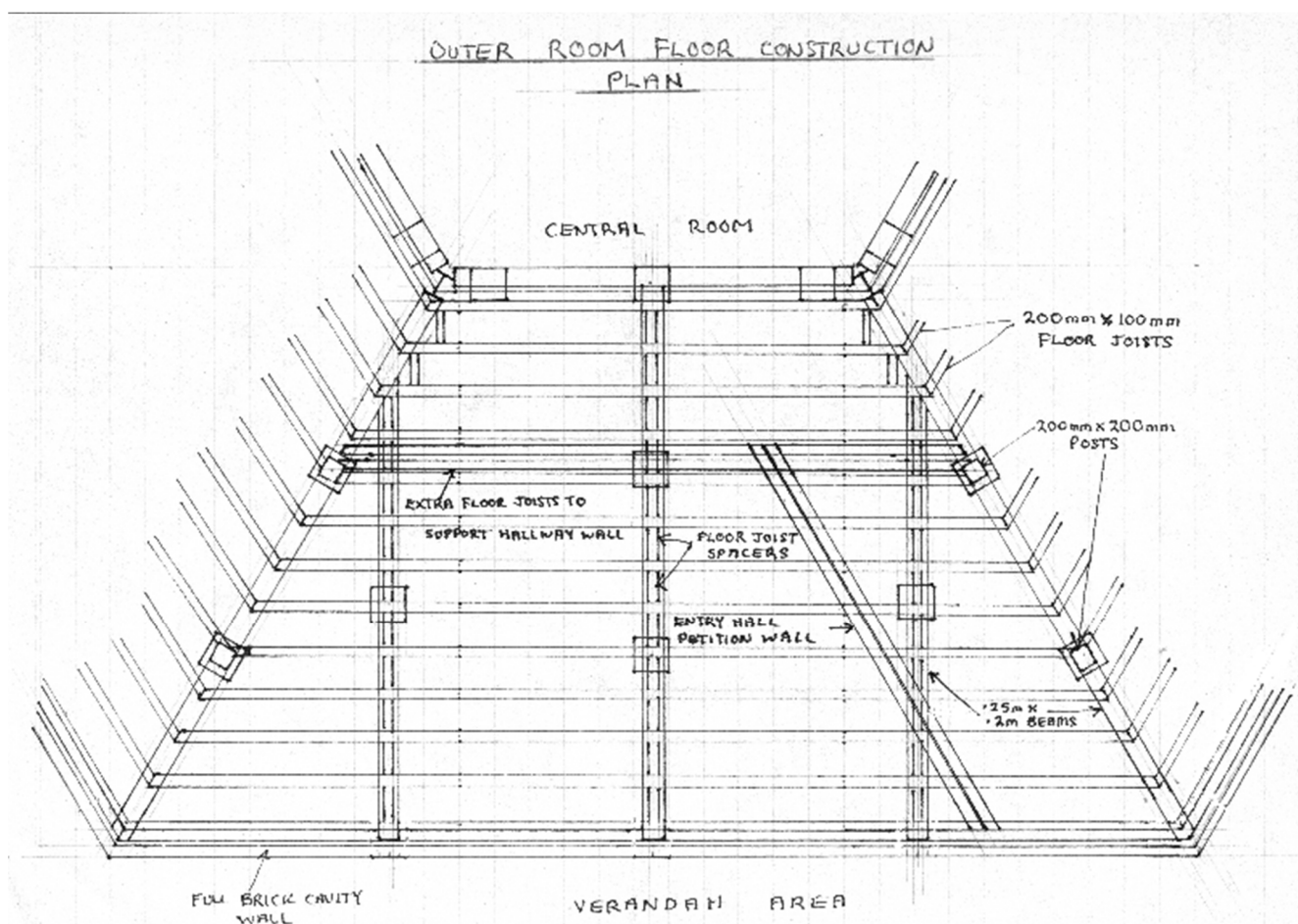
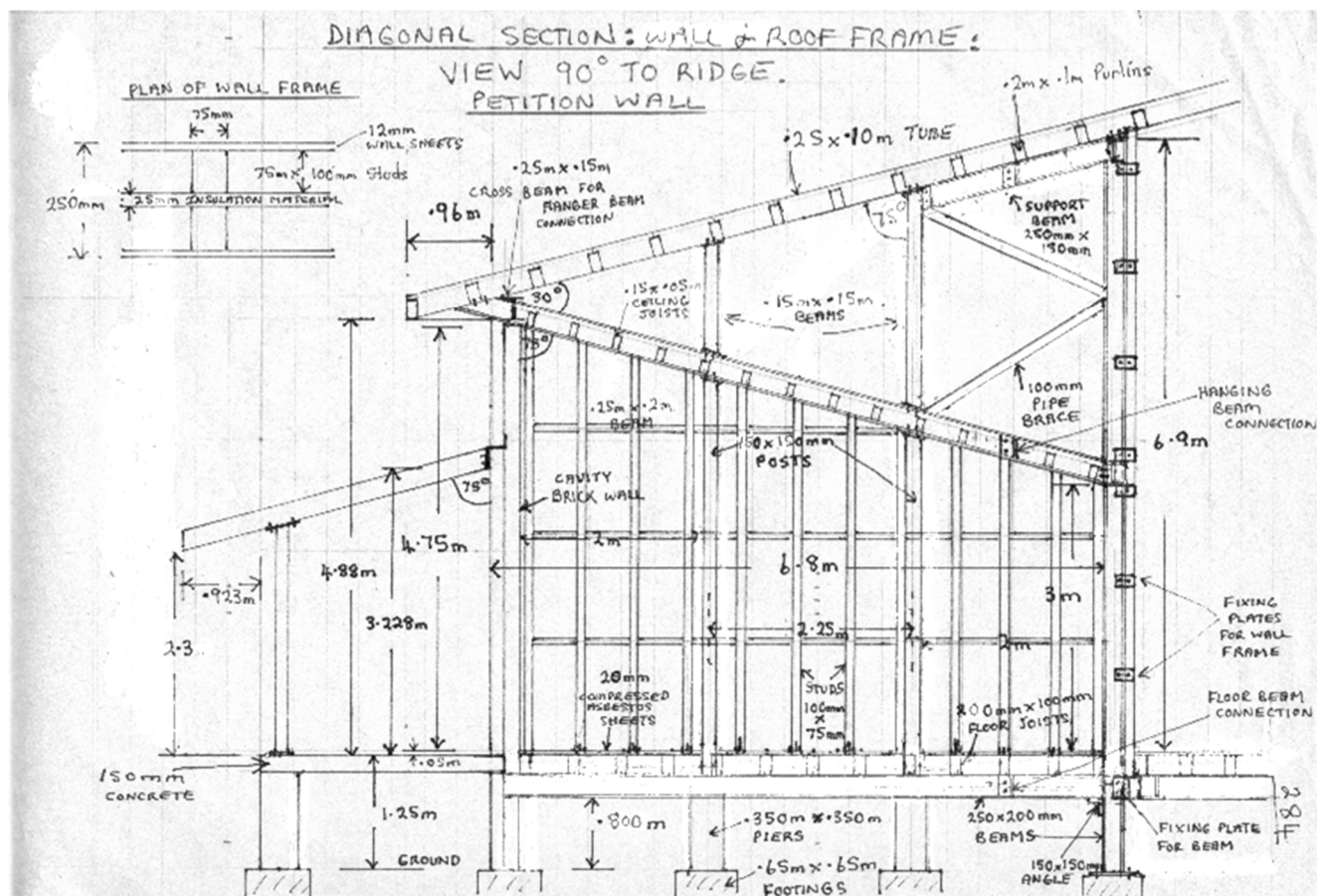
In summary, this System is to re-acquaint ourselves with the Truth of who we are; to consciously reconnect with G.O.D. Consciousness. In this regard, it will be the instigator for Physical change and also Attitudinal Ascension. It is an Interdimensional Communication System.

Transmission Organiser Placement:

Corner of Central Room.
Plan View of Floor section.



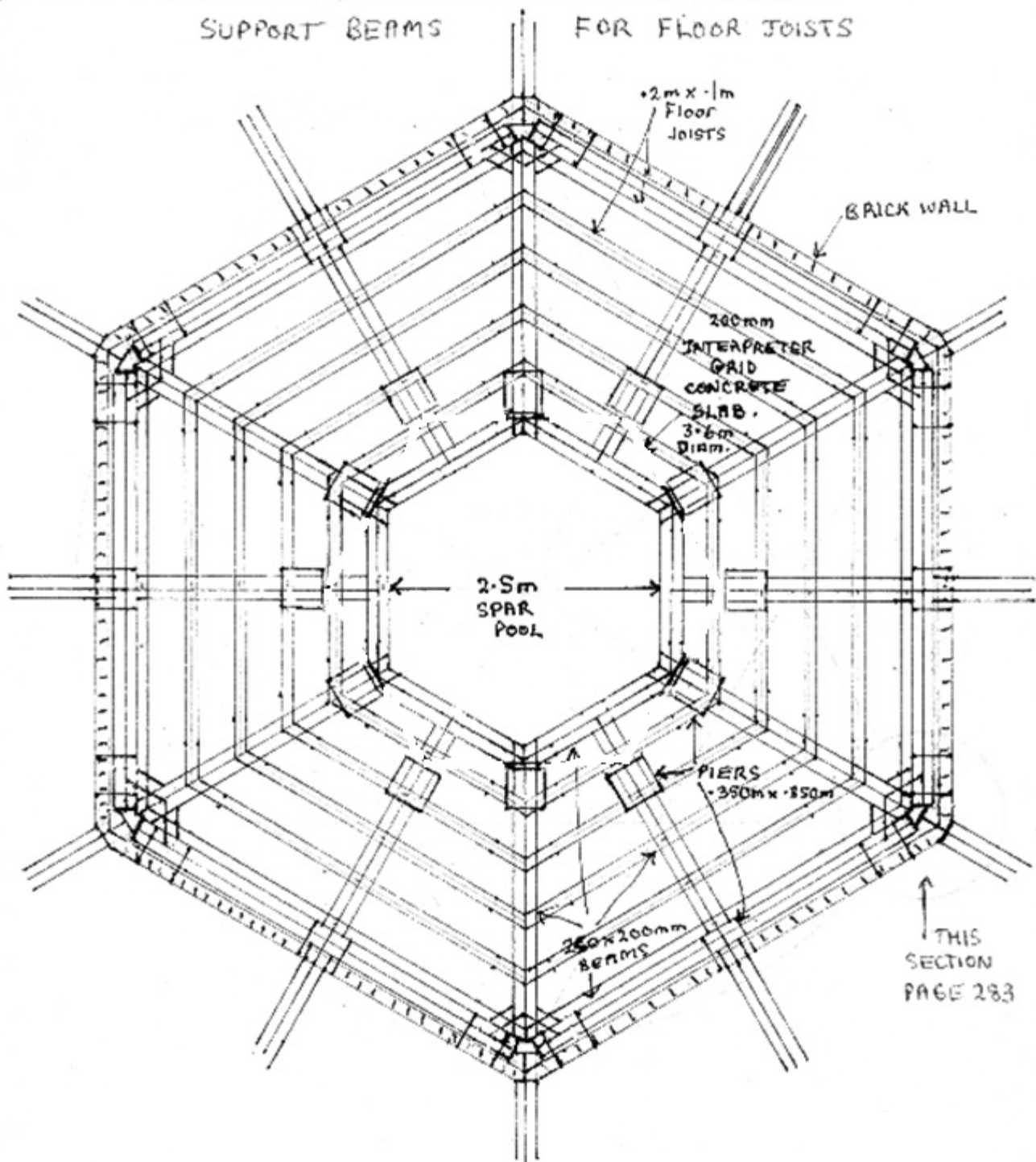
The 50mm Pipe Transmission Organiser must be isolated from any other Metal Framework from Walls Floor or Roof.

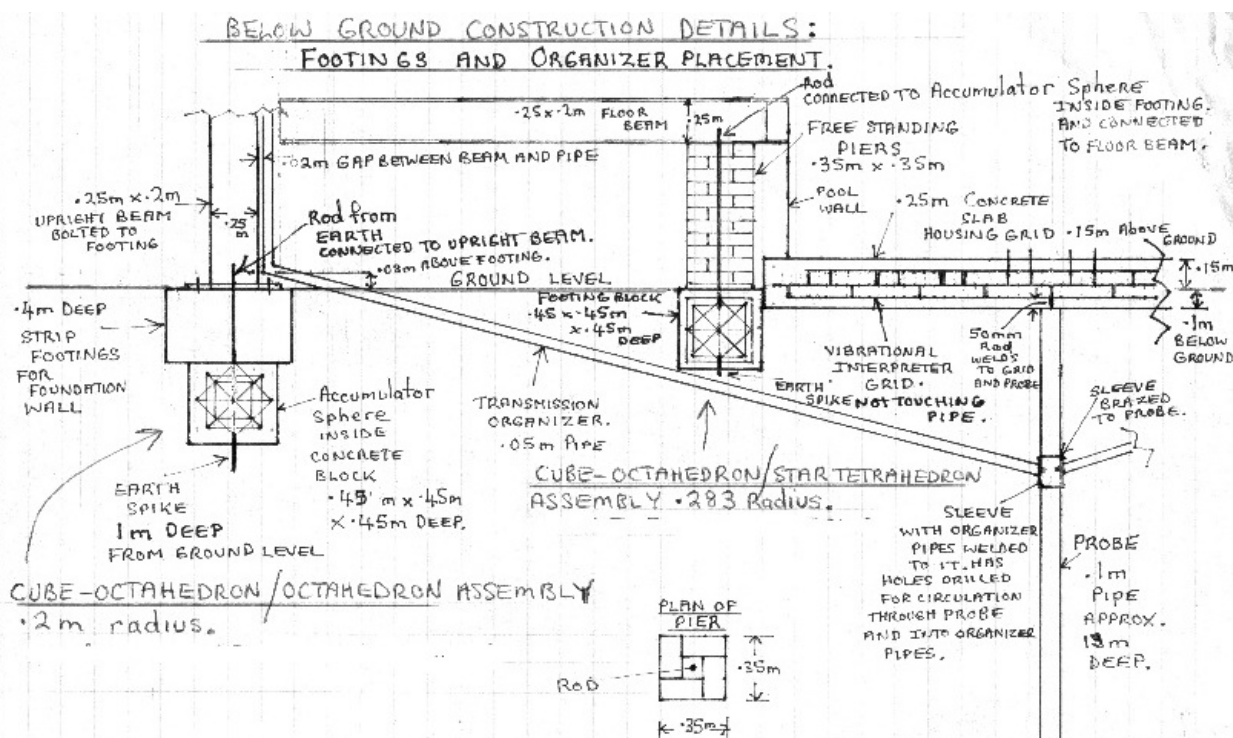
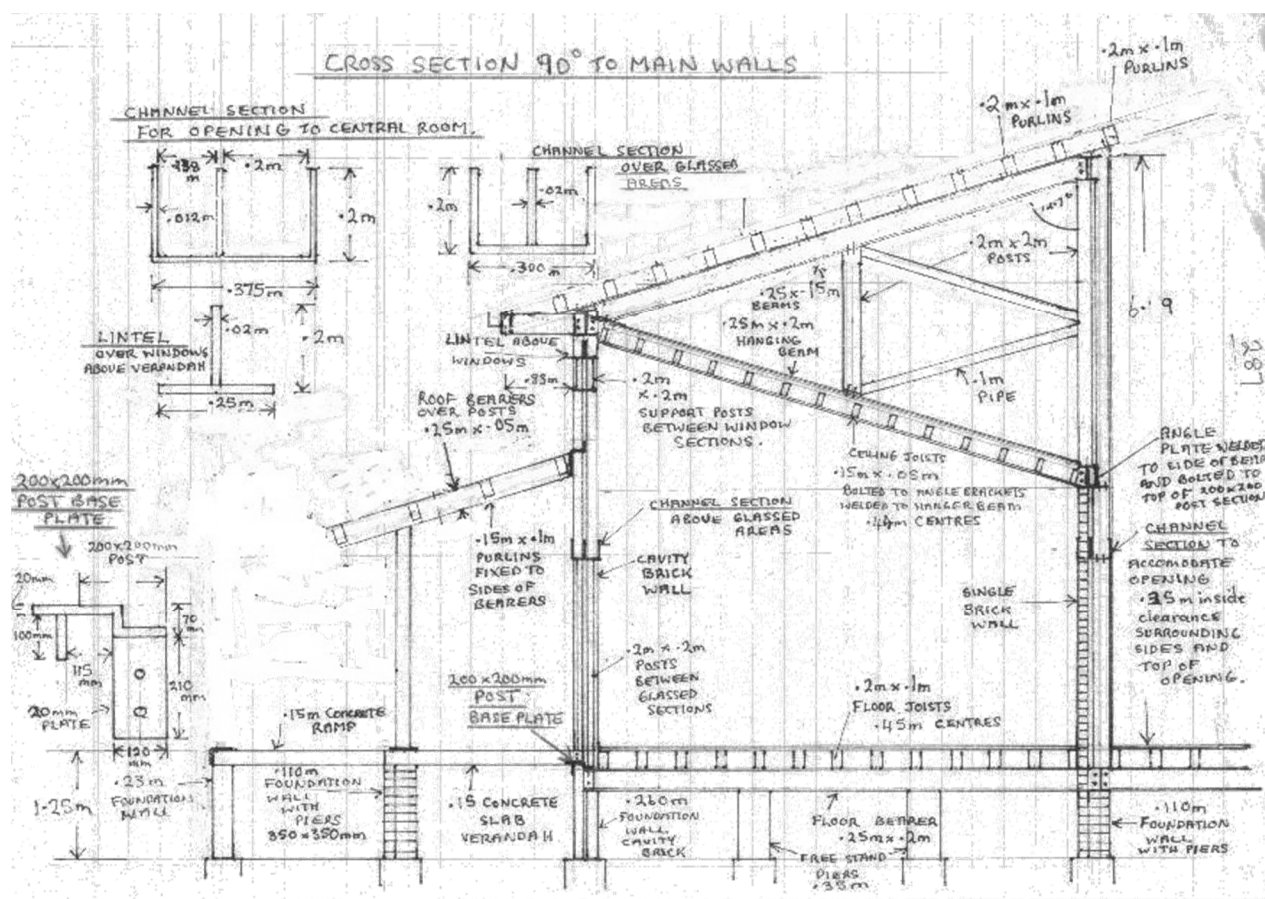


CENTRAL ROOM FLOOR CONSTRUCTION :

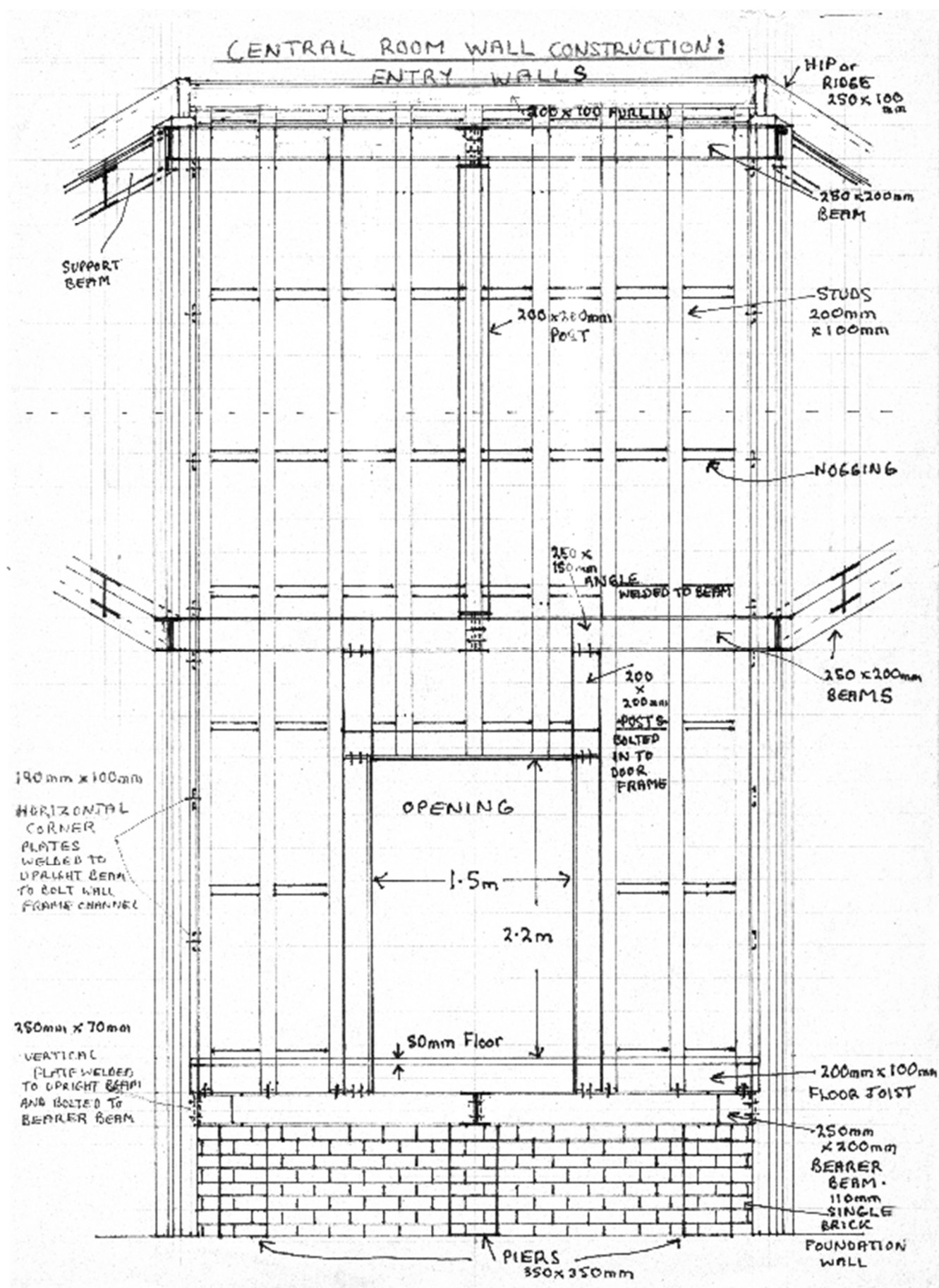
SUPPORT BEAMS

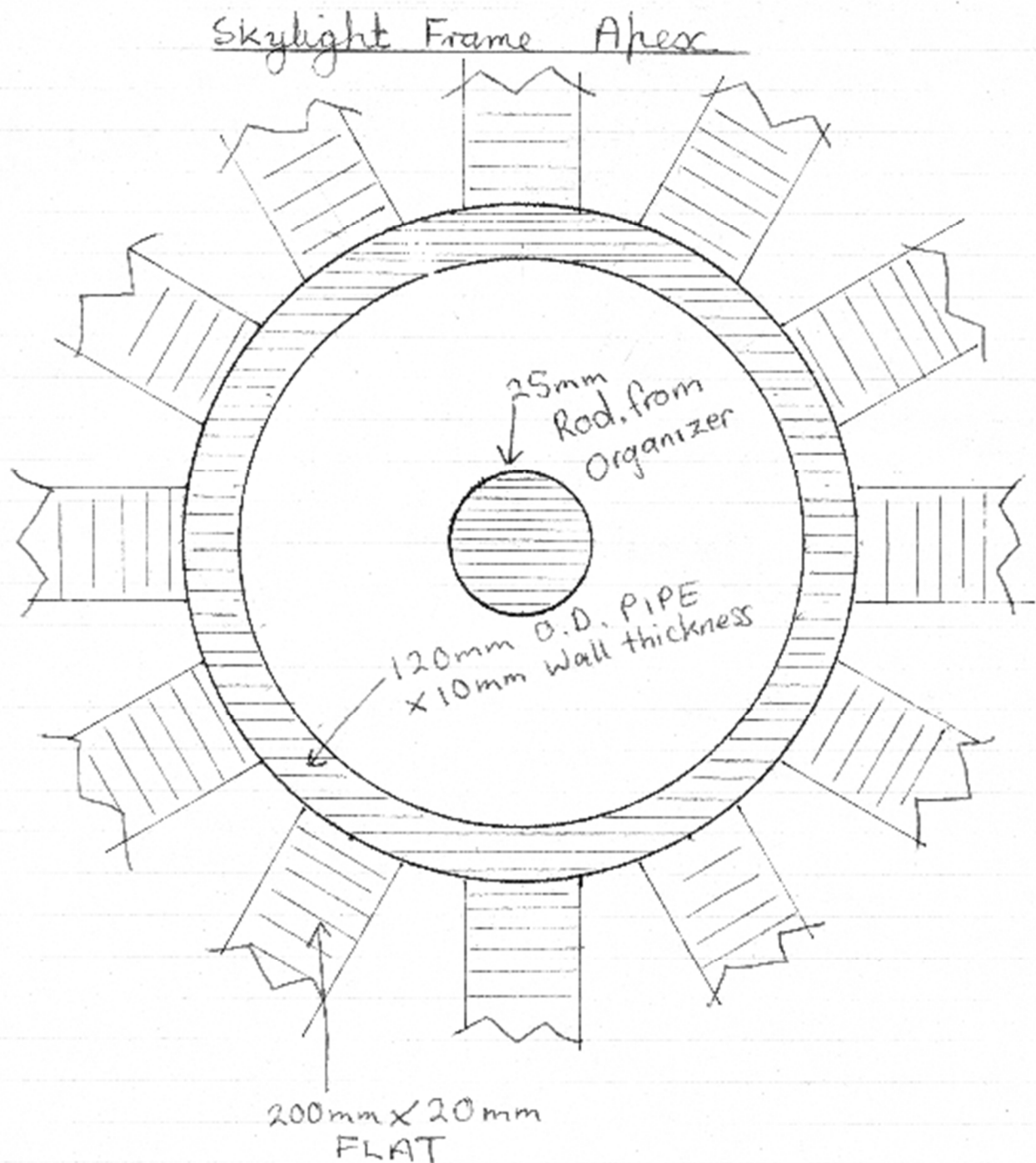
FOR FLOOR JOISTS





All Piers within Organizer have hollow centre with Rod passing through. The Pier is then filled with Concrete. The Pier over strip footings have a rod passing through the strip footing to attach to Floor frame. The rod needs to contact the reinforcing within the strip footings.





Sustainability: Water Catchment

The two Main Buildings within the Complex Matrix have a roof area each of 633 sq. metres. The Hostel Buildings have a combined roof area of 544 sq. metres. If the average rainfall of the site was 1.1 metres per year the catchment capability of the Complex would be approx. 703 gallons (3195.5 litres) per day. Each of the Main Buildings has a catchment capability of 246 gallons approx. The Hostel buildings have a capability of 211 gallons per day each. The water obtained would be used for drinking

and cooking. All other purposes would be met by pumping water from the dams, and if possible from underground sources. The water from the dams would be filtered to a degree necessary for toiletry needs. The dams will be topped up from water drained off from the car parking and surrounding access areas. The water will be directed to silt traps and gravel filtering trenches before reaching the dams. The catchment area of the Reception and Re-education Building's surrounding grounds is 3490 sq. metres. Its catchment capability with the same average rainfall would be 1356 gallons per day. Of course, evaporation and absorption would have to be taken into account.

The catchment area of the other Building's surrounds is approx. the same once the landing areas are taken into account. Then the dam replenishing capability from these areas is approx. 2700 gallons per day. The surface area of the dams themselves as well as the runoff from surrounding areas should contribute a large amount to the total. At least it should account for evaporation.

Biocycle Septic Systems shall be used in this Complex whereby all waste water or products shall be reorganised so as to make them useable.

The storage capability as far as catchment water is concerned shall be approx. 58514 gallons within 14 tanks. Each tank with the dimensions of 3 metres diameter and 2.5 metres deep shall have the capacity to hold 3900 gallons. 4 of these tanks shall be for storing dam water pumped up for use in toilets and showers. Filter Systems shall be connected to these 4 tanks so as to make this possible. The 4 tanks concerned will hold 15604 gallons all told. The other 11 tanks shall collect water from roof areas. Their total capacity will be 42910 gallons.

The Biocycle System shall have a capacity of approx. 26000 gallons or 118 cubic metres of storage. There are 3 tanks in this System. They are each 5 metres in diameter and 2 metres deep. An individual tank has a capacity of 39.2 cubic metres or 8668.7 gallons.

Accommodation Capacity

There are 20 rooms available on this Complex. They are within two Octagon two-story buildings. They are Hostel standard only.

There are 108 car parking spaces, 18 of which are for the disabled. There is also bus parking for about 4 buses. A two-lane roadway encircles the Complex with provision for bicycles as in a Cycle-way. The roadway is for one-way traffic only. The Centre has been designed for easy access for the disabled and elderly.

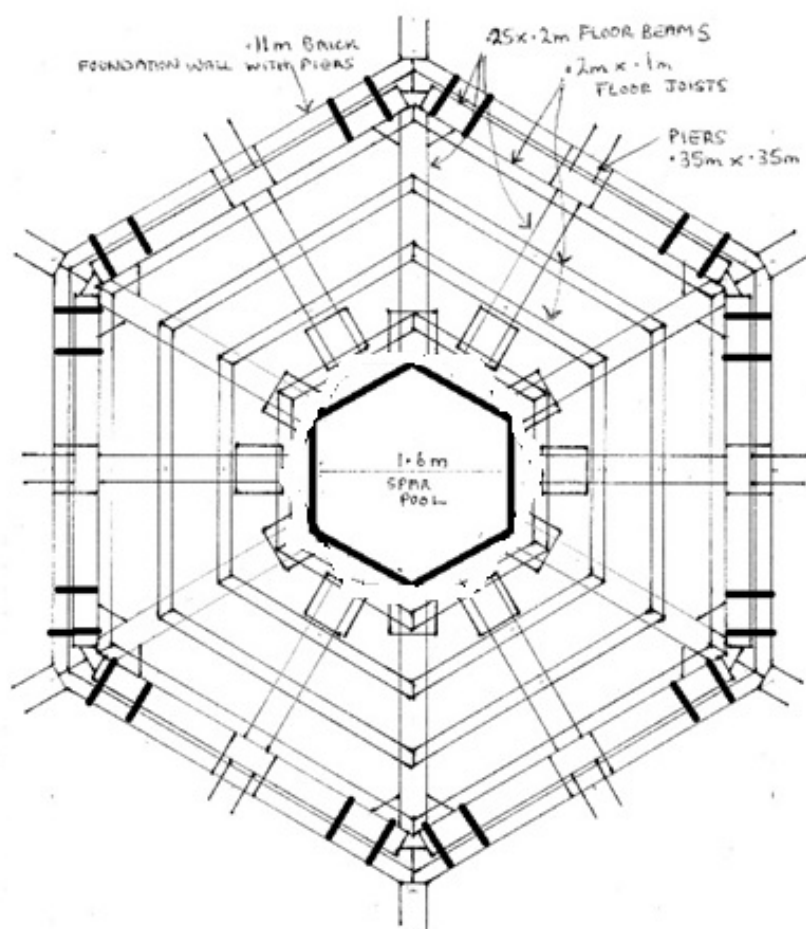
The Accommodation buildings have no cooking facilities. There is a Laundromat and a ground floor Common area. Tea and coffee making facilities are available in the Common area. There is a large Restaurant for all catering needs. It has a seating capability for 78 people.

Caretaker Building:

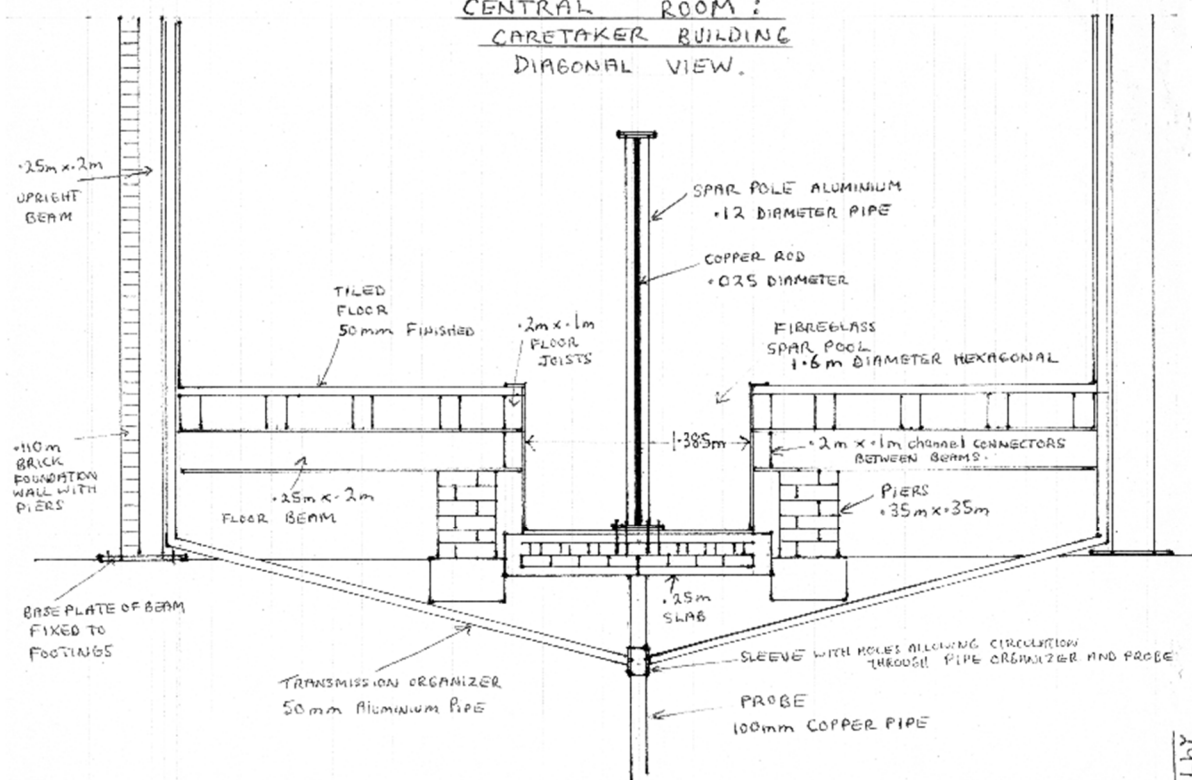
Construction Principles of Grid.

The Grid under the Spar Pool will be 1.6m in diameter. The concrete slab will be 1.85m in diameter. The Equilateral Triangle Grid layer will have each triangle edge at 200mm long. The Circle Grid shall have each circle at 115.47mm radius. The Hexagon Grid shall have Hexagon edges at 115.47mm long. The Concrete slab will be 250mm thick, and the Complete 3-layered Grid shall be 136mm deep. It is made from 12mm rod, and has connecting rods 50mm long between each layer. The Hexagon's studs protruding through the top of the slab will be approx. 120mm long all told. This should allow about 47mm to be visible through or inside the Pool. Threaded section should be about 60mm long. The base plate for the Spar-Pole will be approx. 270mm in diameter. The Pole is 120mm diameter. This leaves 150mm, or 75mm of plate all around. 12mm studs have plenty of clearance for connection. The studs will be at about 115mm centres from each other as Hexagon edges are concerned and approximately 230mm diameter centres.

CENTRAL ROOM FLOOR FRAMES:
CARETAKER BUILDING ONLY,
PLAN.

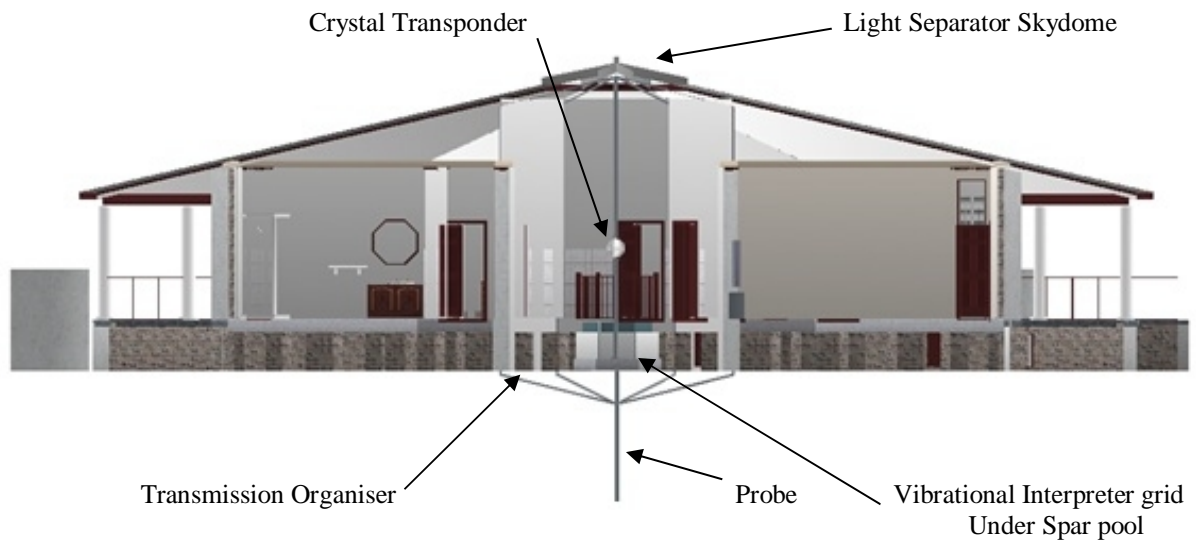


CENTRAL ROOM:
CARETAKER BUILDING
DIAGONAL VIEW.

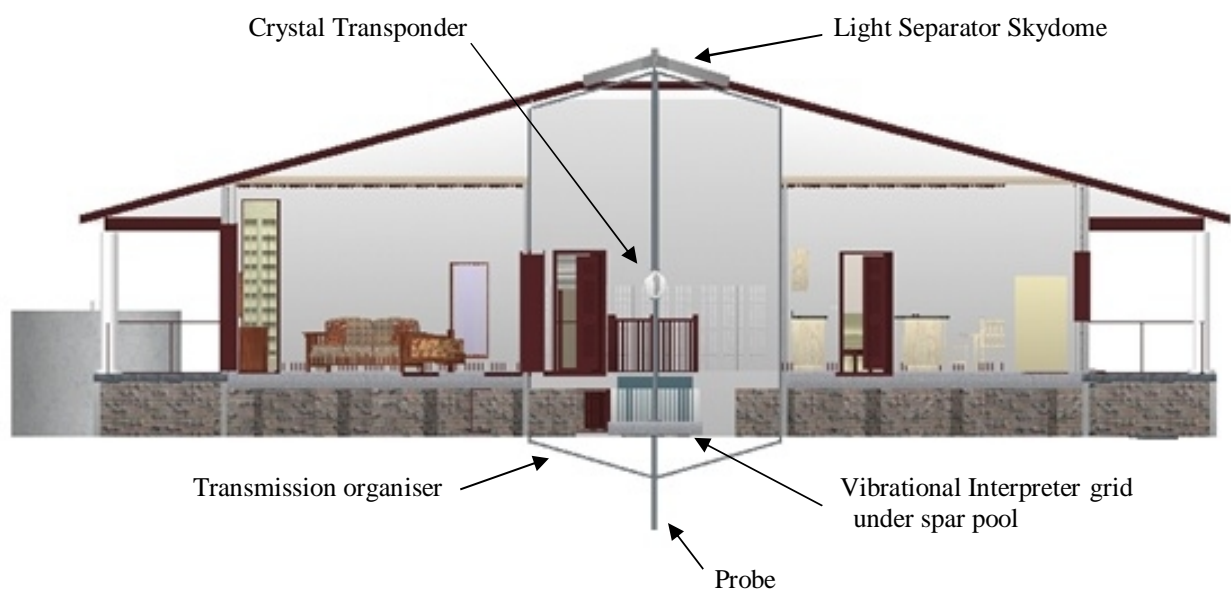


Caretaker building – cutaway views

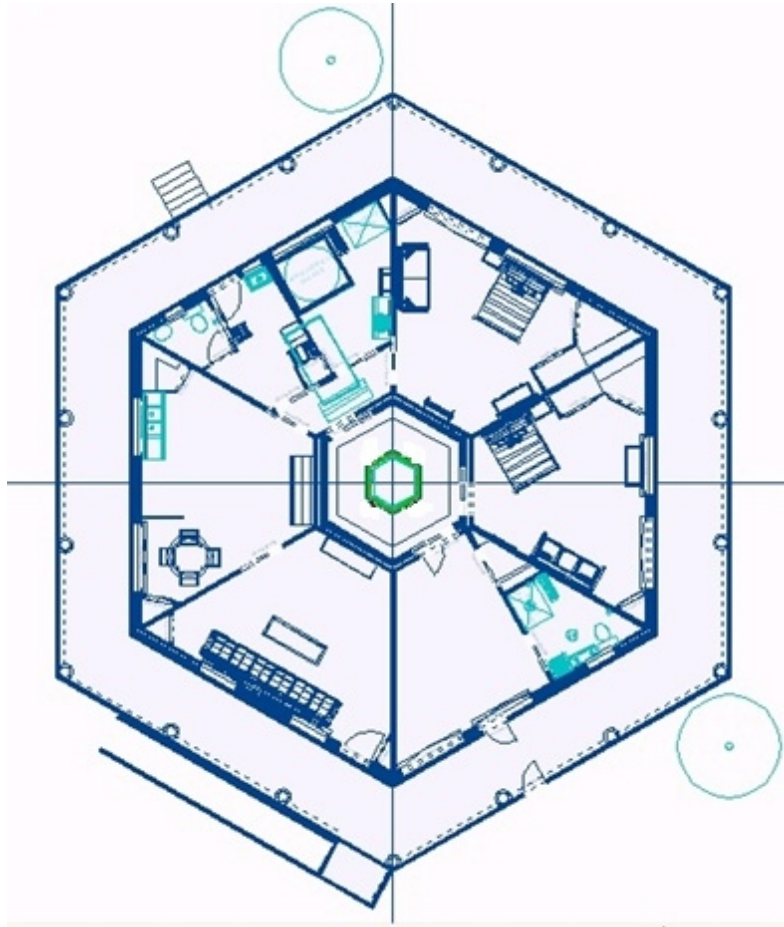
Diagonal view of Hexagon building



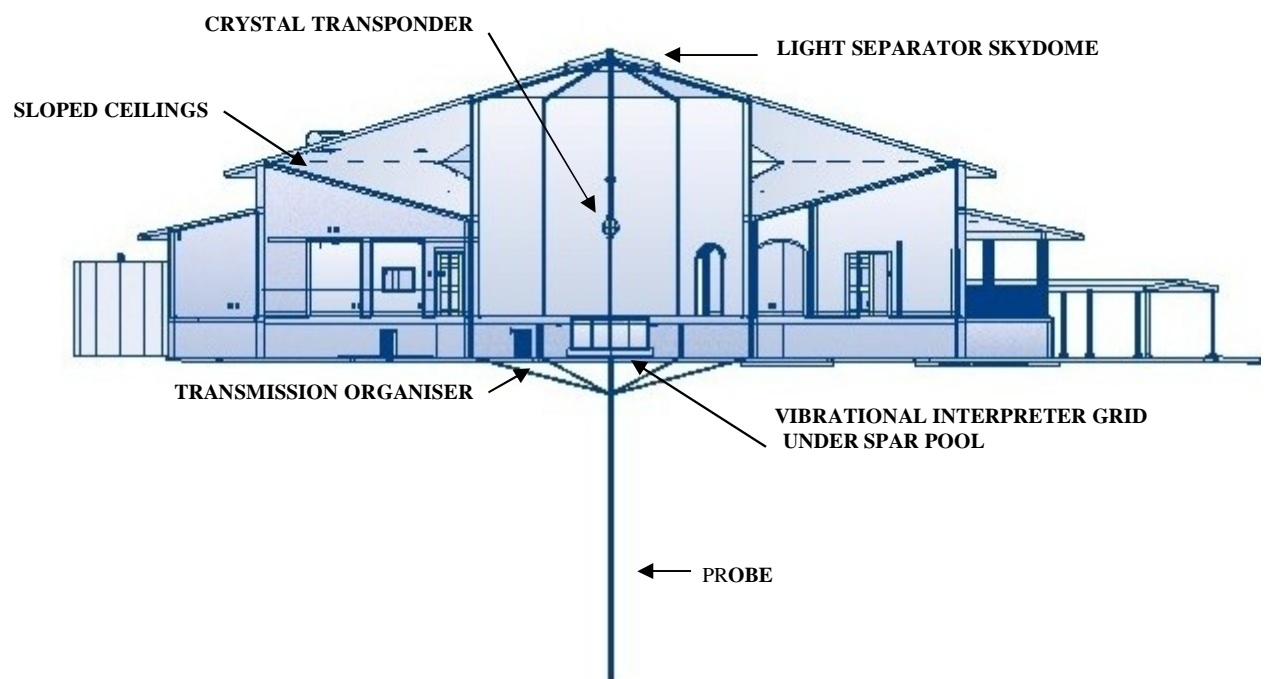
View between parallel walls of Hexagon building



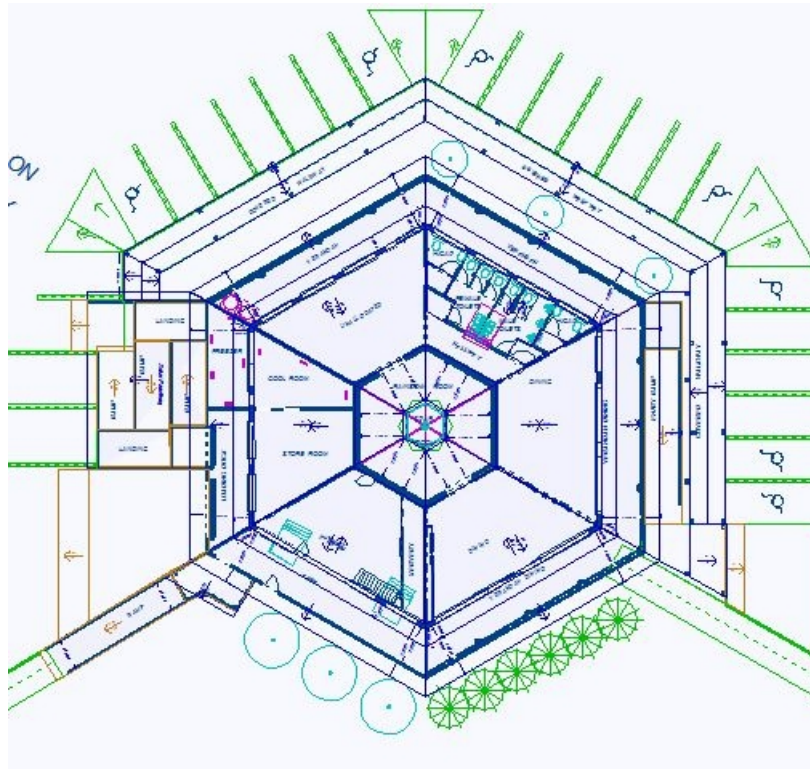
Caretaker building – plan view



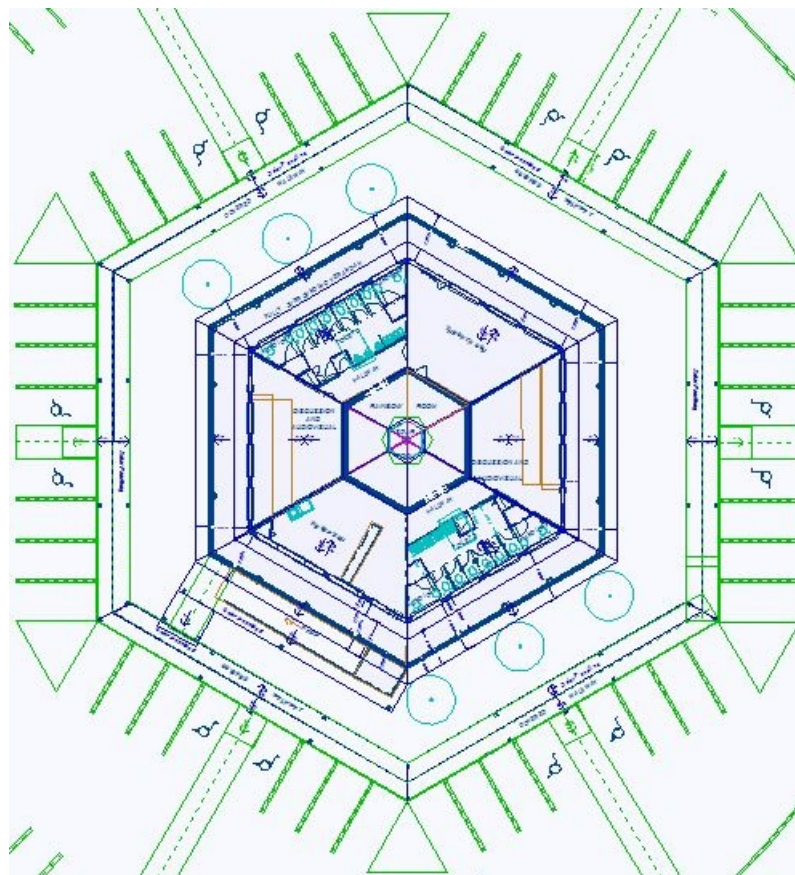
Main Buildings - cutaway view



Healing building – plan view



Re-education building – plan view



ALKAMIRR CENTRE: AERIAL SOUTH VIEW



AERIAL WEST VIEW



AERIAL NORTH VIEW



AERIAL EAST VIEW



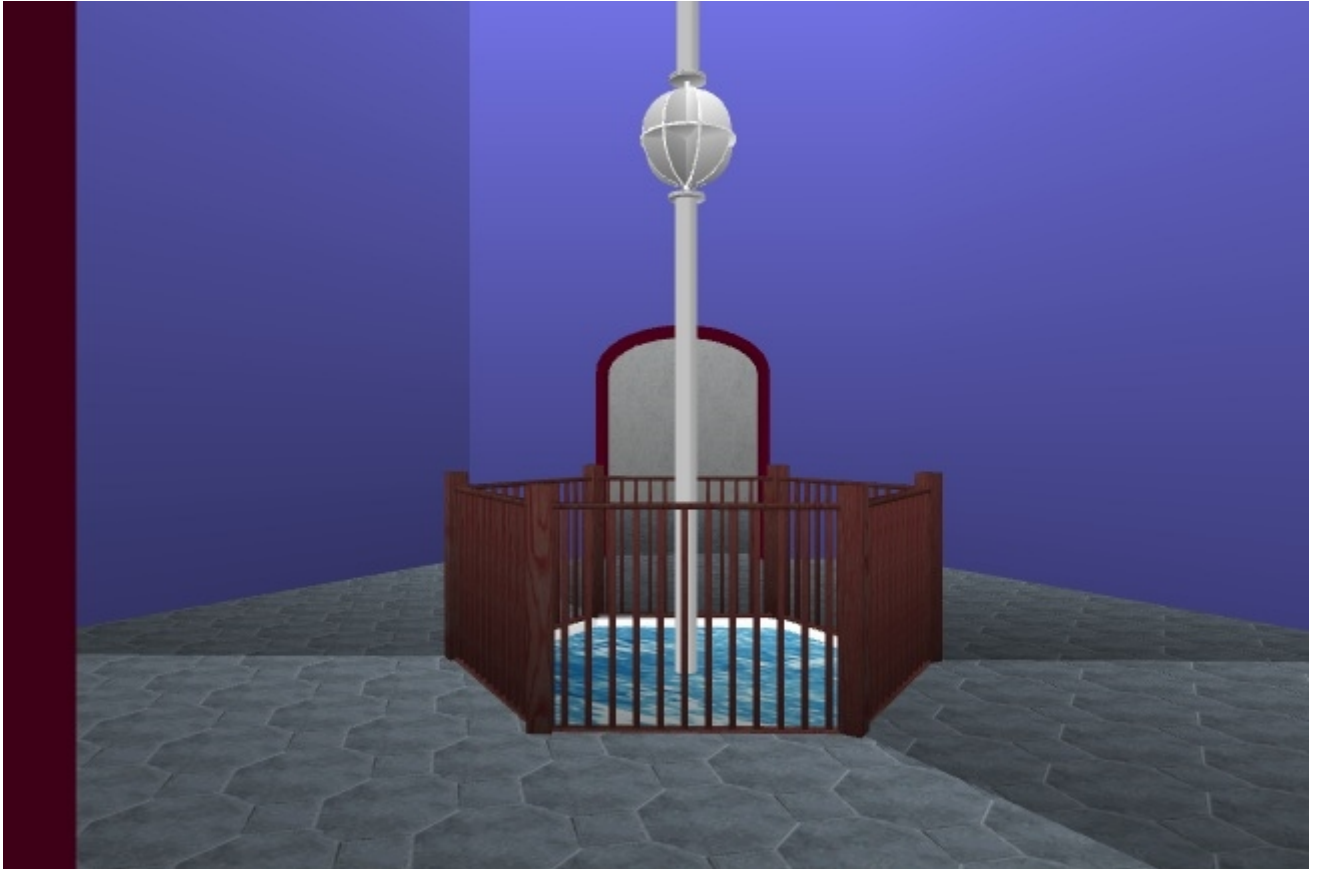
AUDIO/VISUAL ROOMS WITHIN THE RE-EDUCATION CENTRE



CENTRAL ROOM - SPAR POOL



CENTRAL ROOM - SPAR POOL



DINING AREA - SERVERY



EXTENDED DINING AREA VIEWS



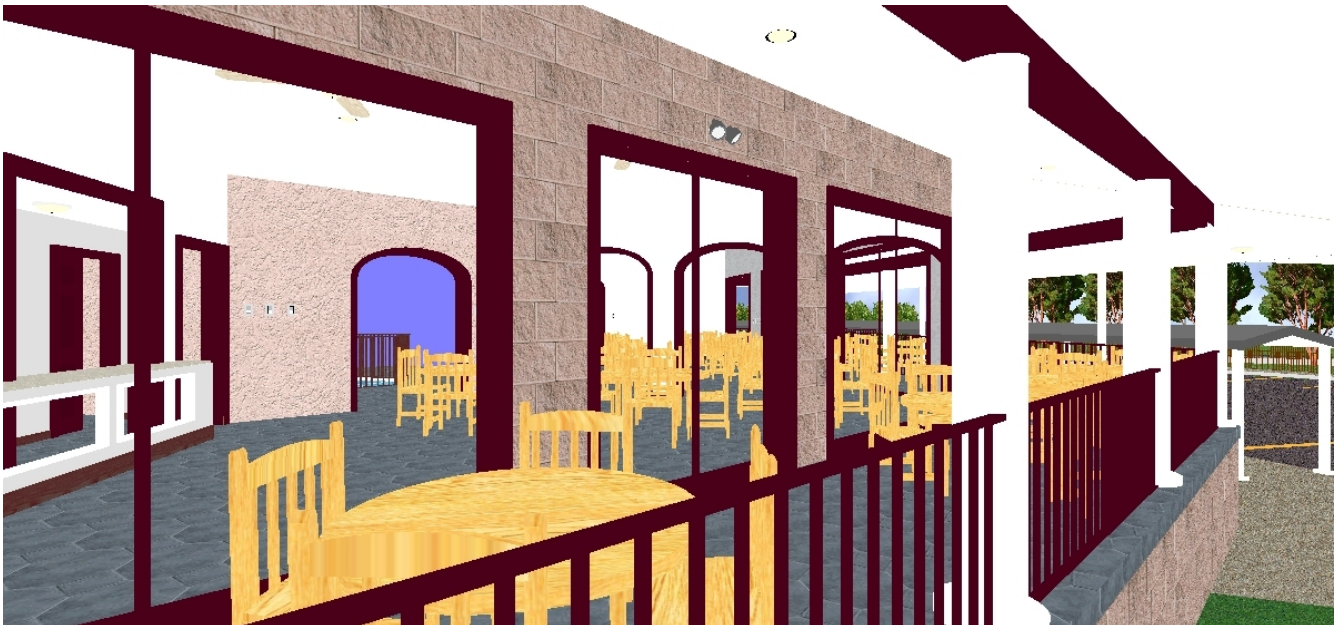
EXTENDED DINING AREA VIEWS



VIEW FROM SERVERY



VIEW FROM VERANDAH



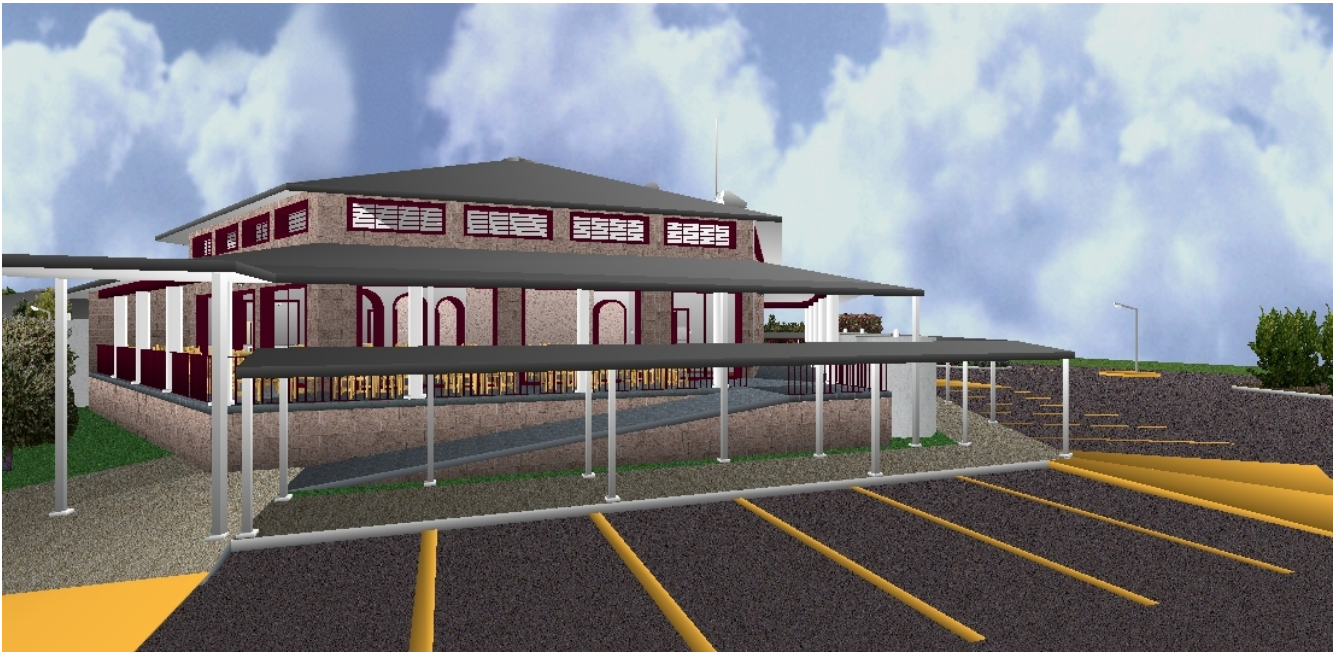
VIEW FROM DINING AREA ENTRY



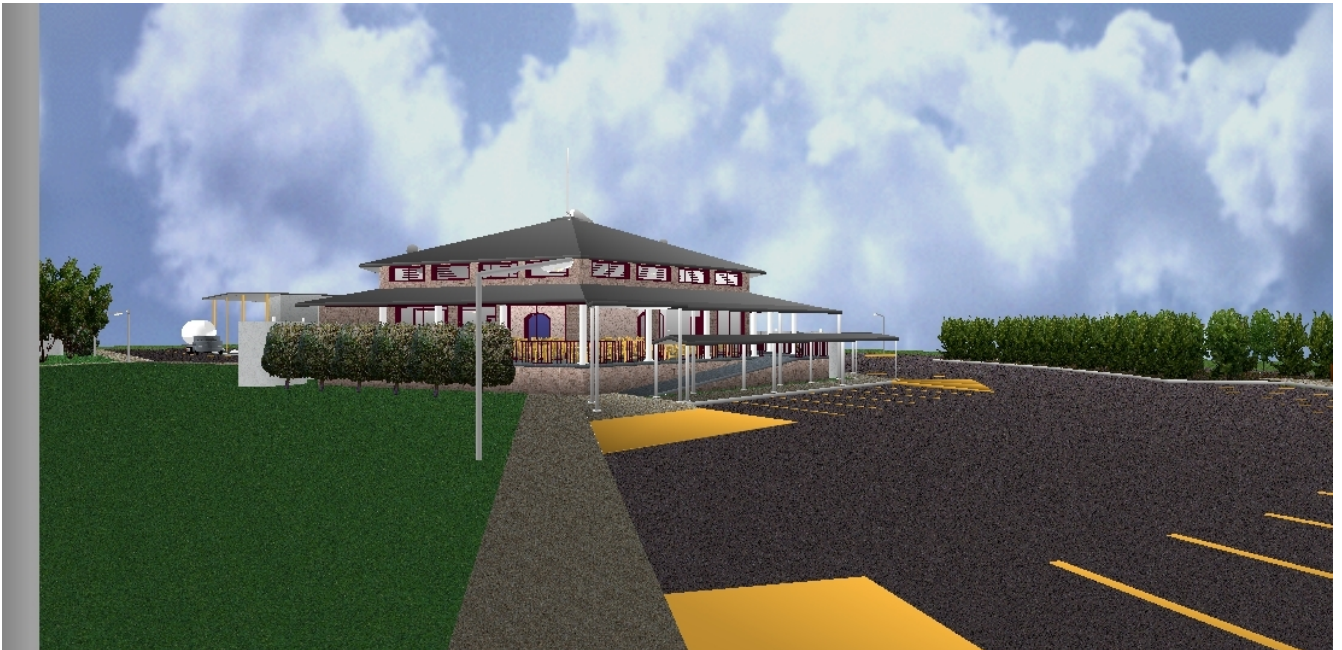
EXTERNAL VIEWS OF DINING AREA



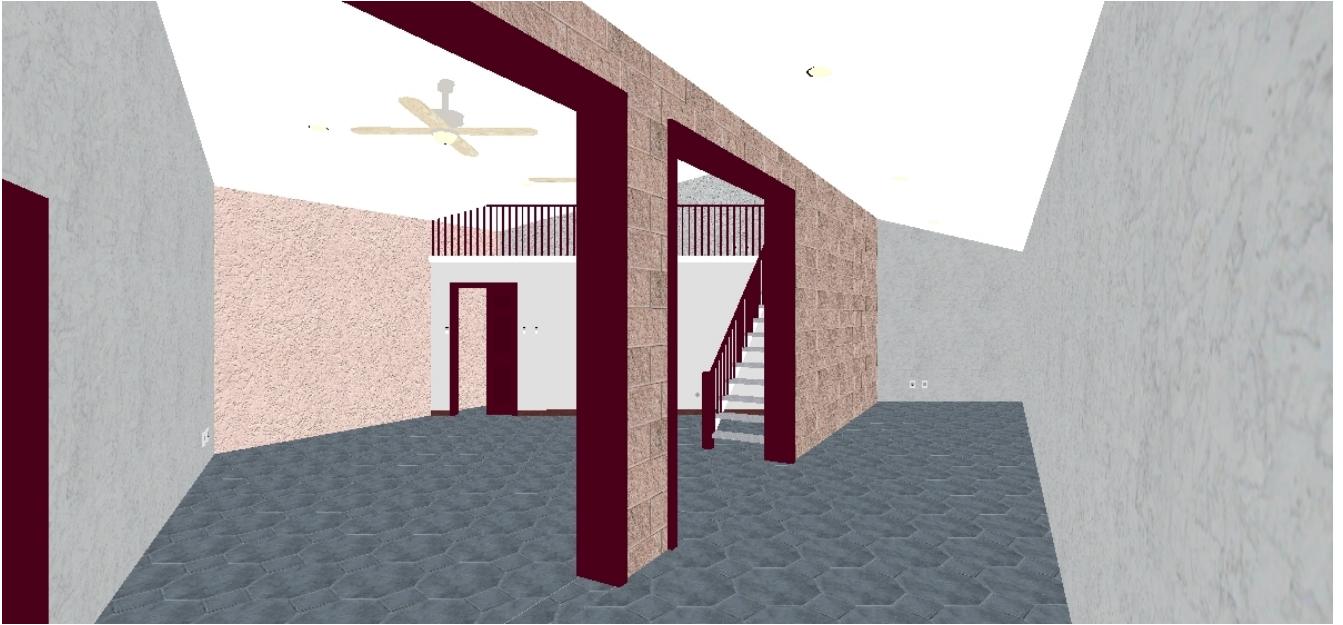
EXTERNAL VIEWS OF DINING AREA



EXTERNAL VIEWS OF DINING AREA



KITCHEN AREA



LOADING DOCK VIEWS



LOADING DOCK VIEWS



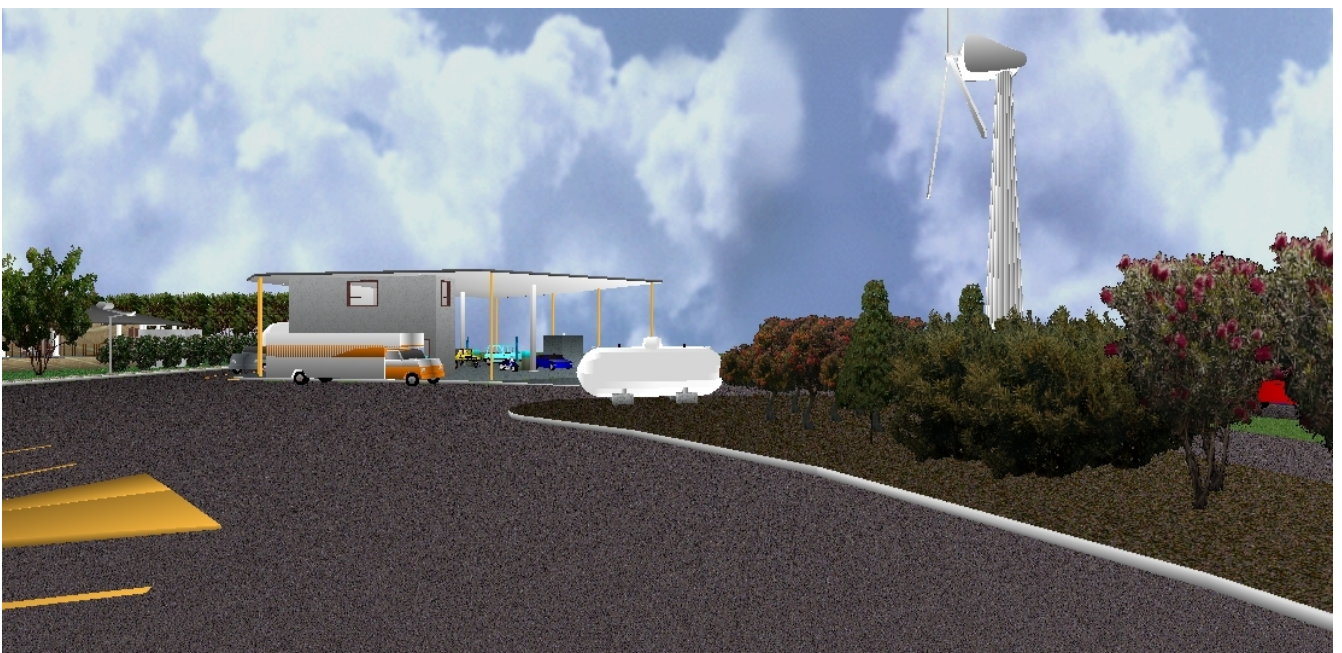
PETROL STATION AND WIND GENERATOR VIEWS



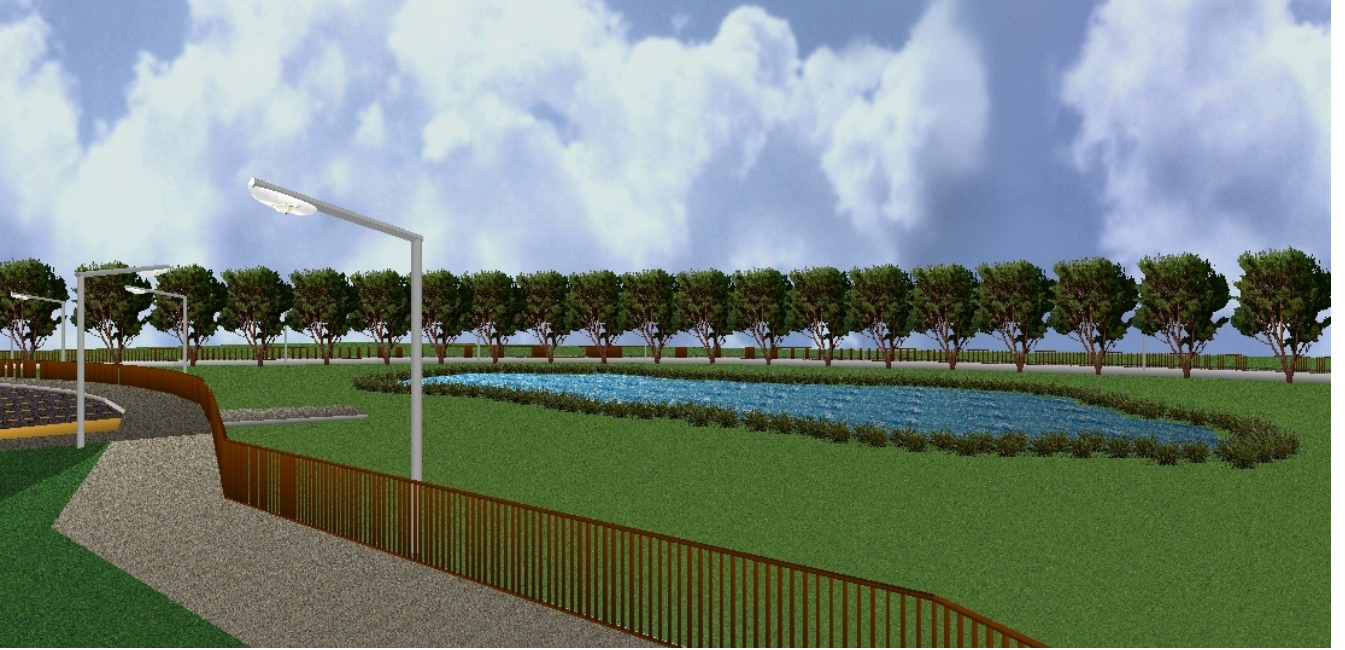
REAR OF PETROL STATION



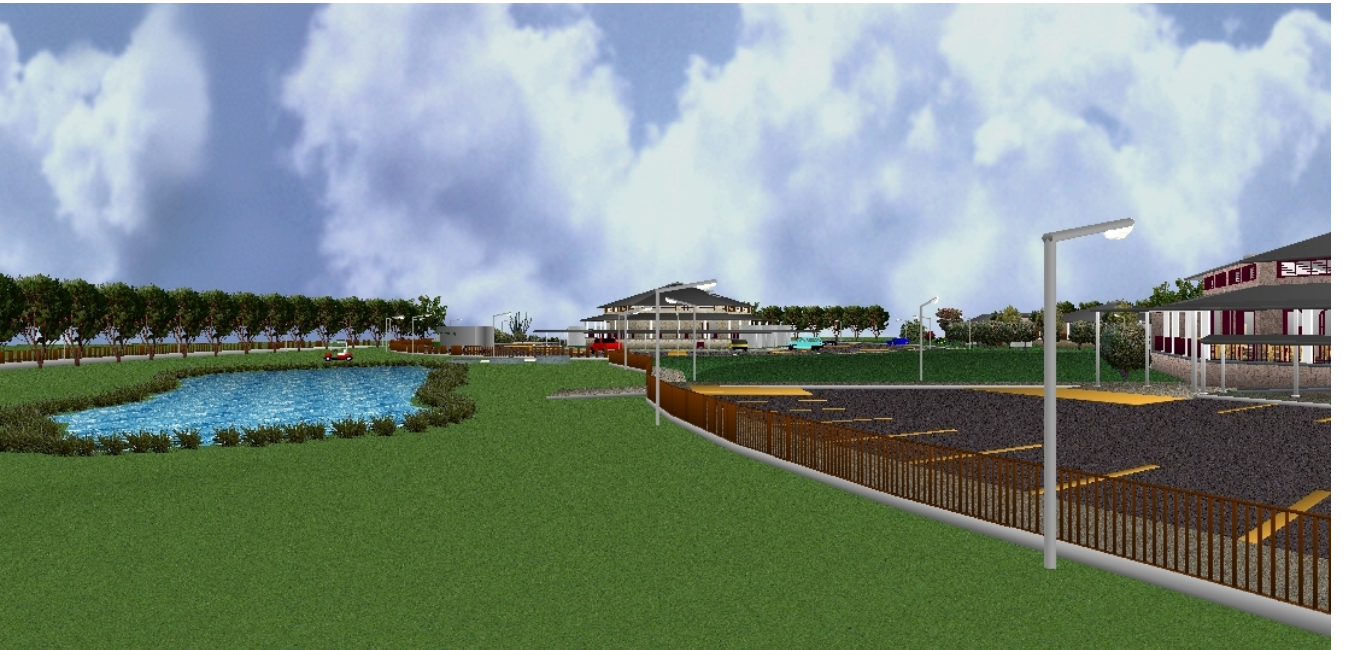
PETROL STATION FROM HEALING CENTRE ENTRY



DAM AND WALKWAY VIEWS



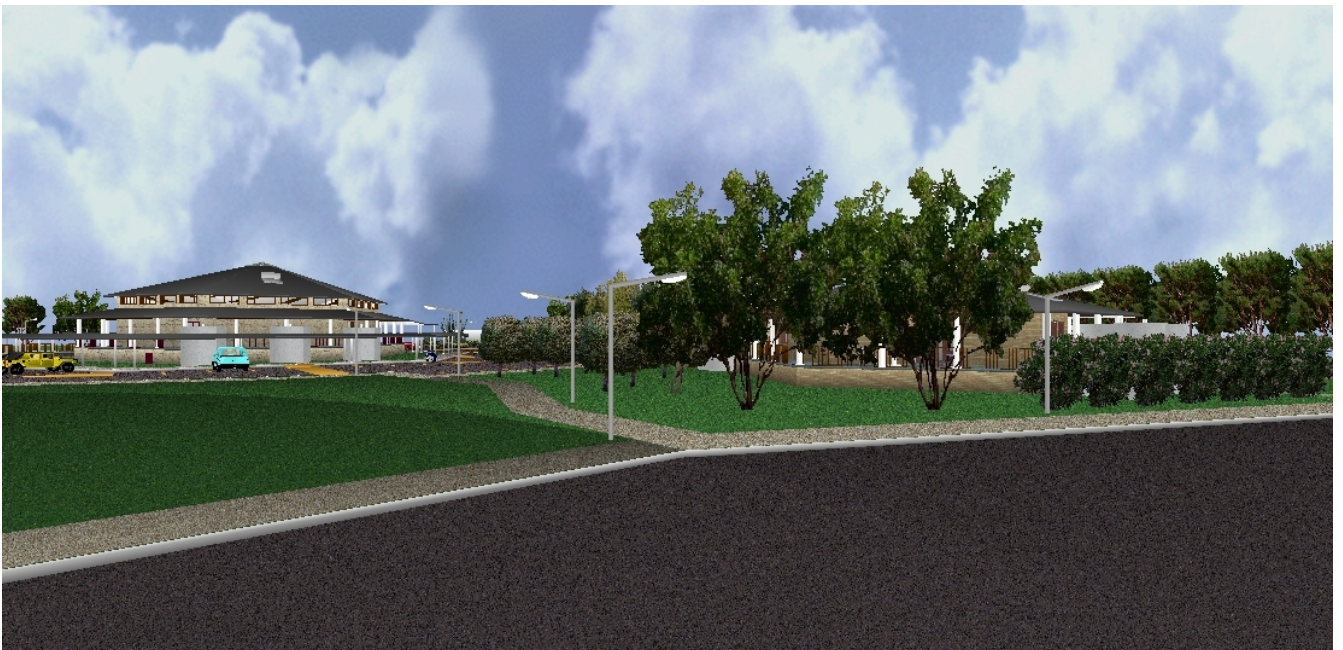
VIEW FROM HEALING CENTRE WALKWAY



VIEW FROM RE-EDUCATION CENTRE WALKWAY



VIEW FROM LOADING DOCK – RE-EDUCATION CENTRE AND CARETAKER'S COTTAGE



CARETAKER'S COTTAGE - REAR VIEW



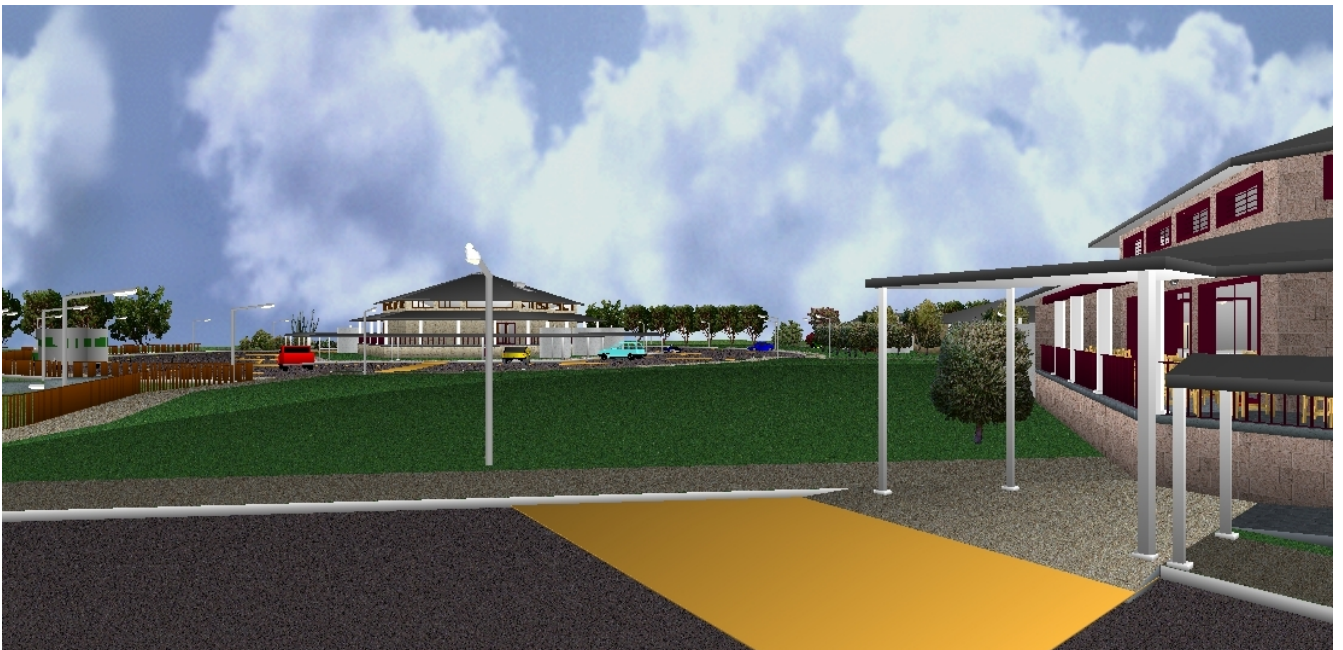
CARETAKER'S COTTAGE - VIEW FROM RE-EDUCATION CENTRE CARPARK



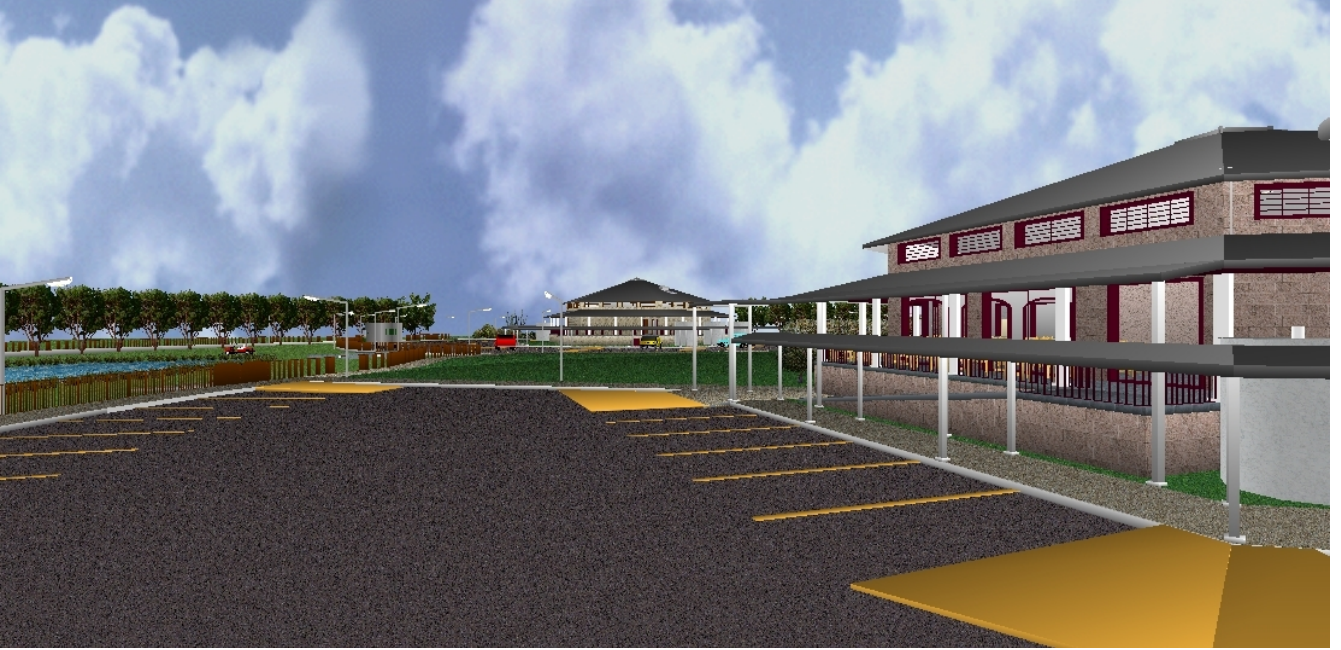
VIEW FROM PETROL STATION ENTRY



VIEWS FROM HEALING CENTRE CARPARK



VIEWS FROM HEALING CENTRE CARPARK



VIEW OF RE-EDUCATION CENTRE FROM BUS PARKING AREA



RE-EDUCATION AND HEALING CENTRES - EAST SIDE



RE-EDUCATION CENTRE - WEST SIDE



RE-EDUCATION CENTRE - ENTRY CARPARK



CARETAKER'S COTTAGE FROM ROADWAY



RE-EDUCATION CENTRE - RECEPTION AREA ENTRY



RECEPTION AREA – INTERIOR VIEW



TWO OCTAGON ACCOMMODATION BUILDINGS BETWEEN HEALING AND RE-
EDUCATION BUILDINGS – SIDE VIEW



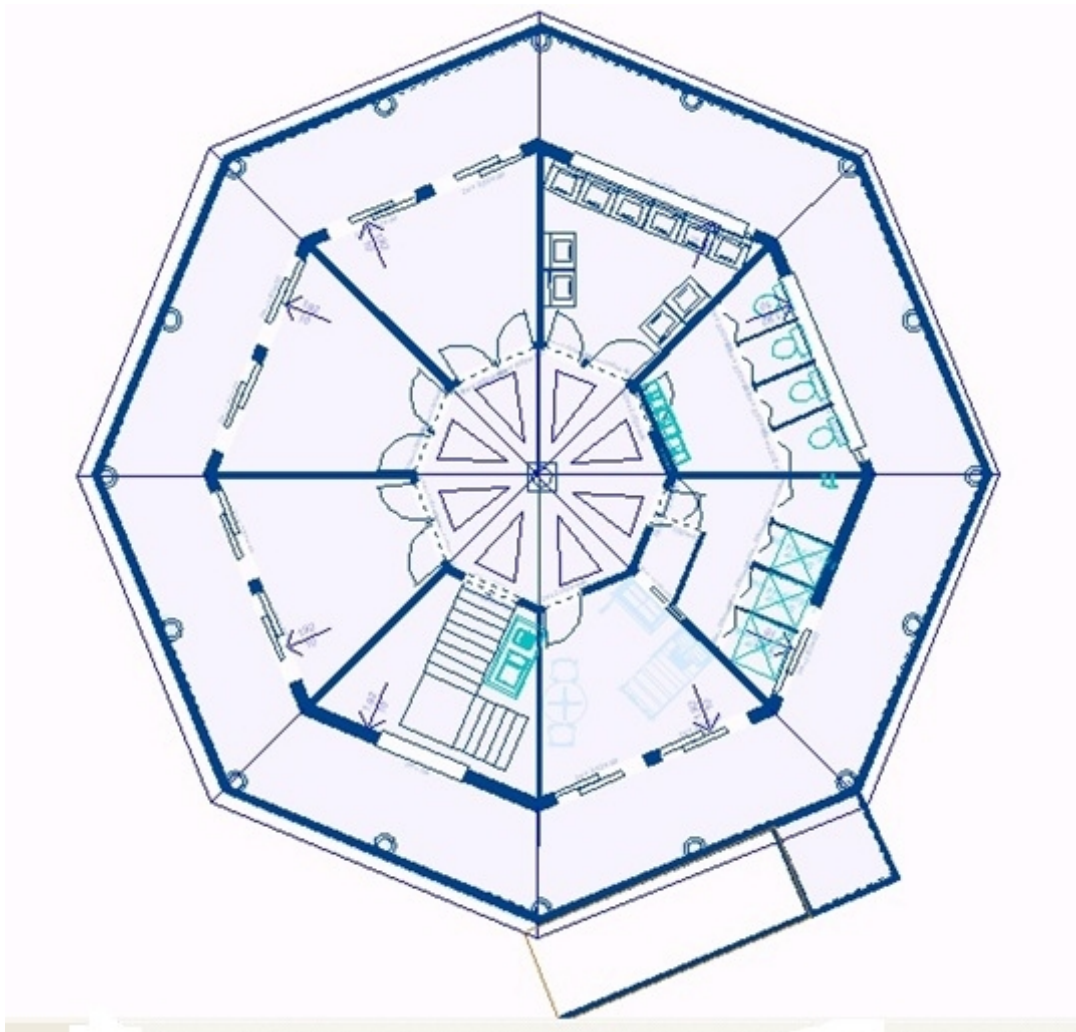
TWO OCTAGON ACCOMMODATION BUILDINGS – ENTRY VIEWS



SIDE VIEW OF OCTAGON ACCOMMODATION BUILDING - ENTRY



PLAN VIEW OF OCTAGON ACCOMMODATION BUILDING



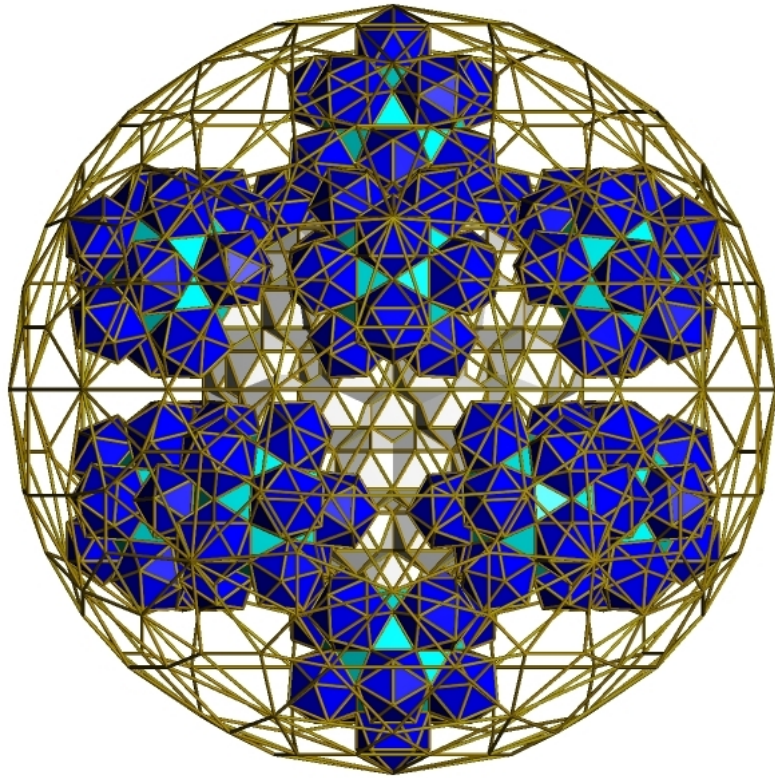
OCTAGON ACCOMMODATION BUILDING – TOP FLOOR CENTRAL ROOM WITH CRYSTAL



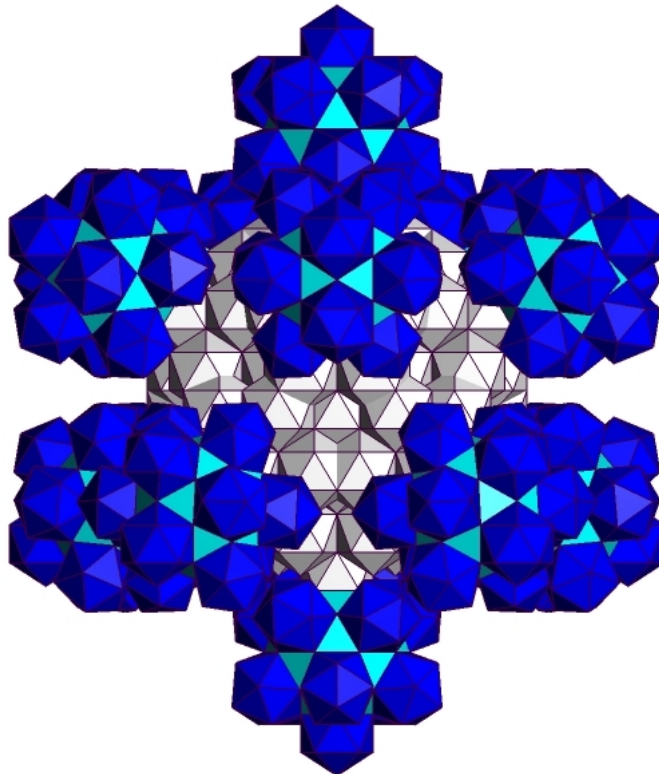
OCTAGON ACCOMMODATION BUILDING – GROUND FLOOR ENTRY



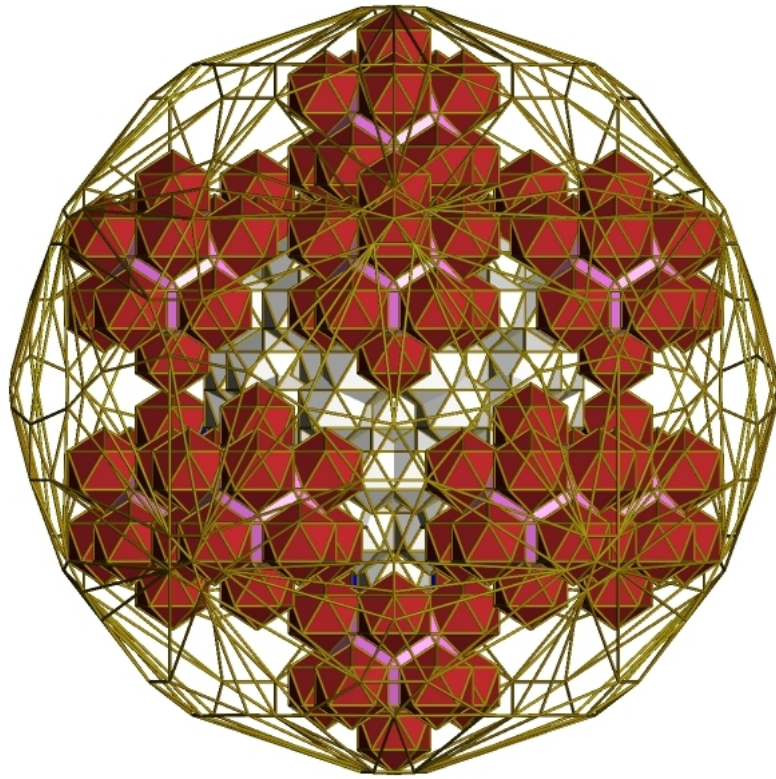
Crystal Transponder – Healing



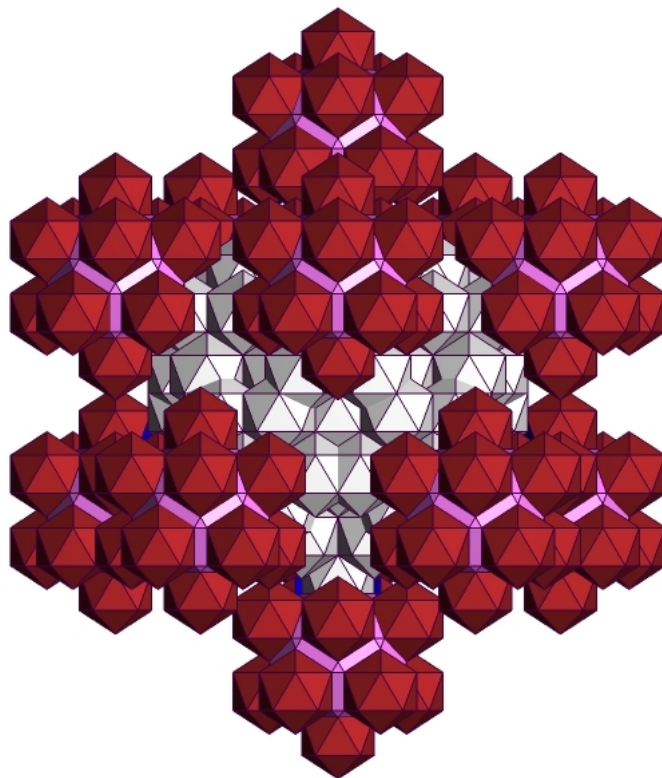
The radius of this Crystal Transponder is 343mm. The Icosahedrons have an edge length of 40mm.



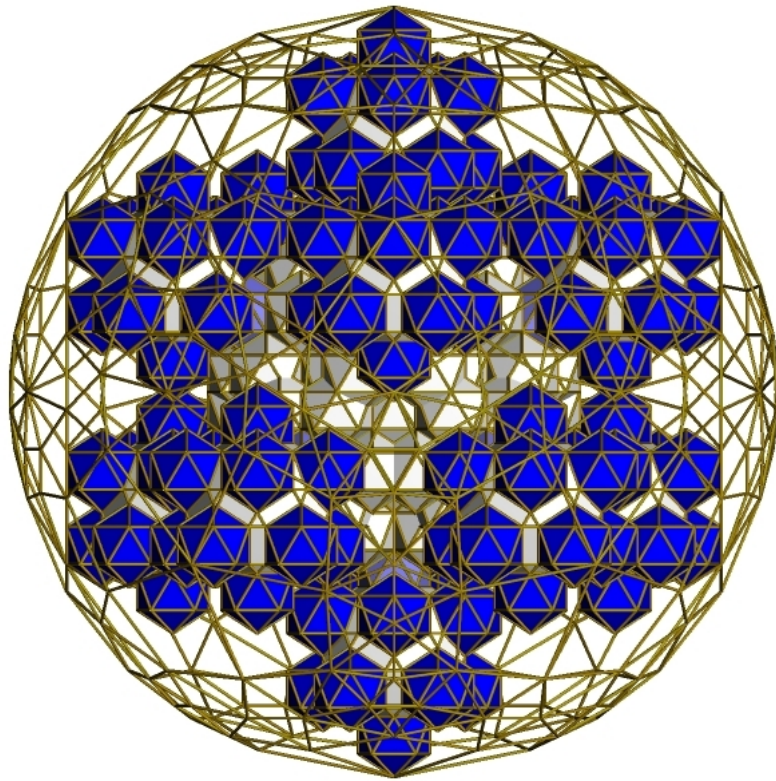
Crystal Transponder – Re-education



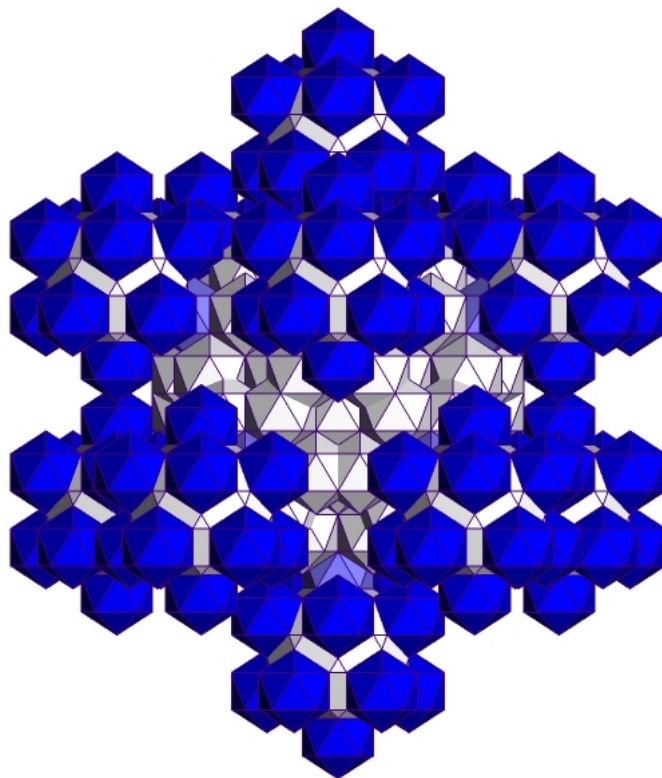
The radius of this Crystal Transponder is 343mm. The Icosahedrons have an edge length of 40mm.



Crystal Transponder – Caretaker

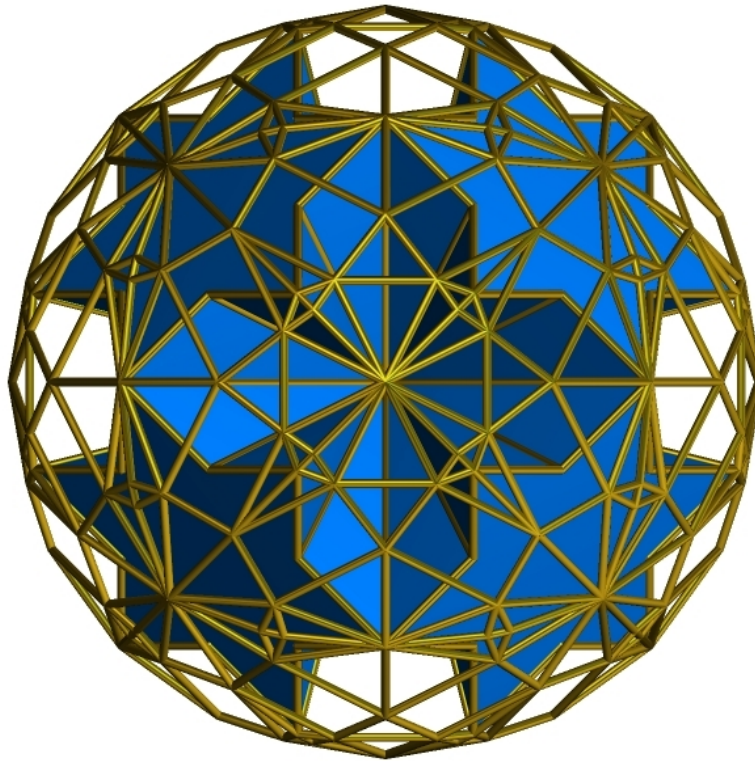


The radius of this Crystal Transponder is 351mm. The Icosahedrons have a 40mm edge length.

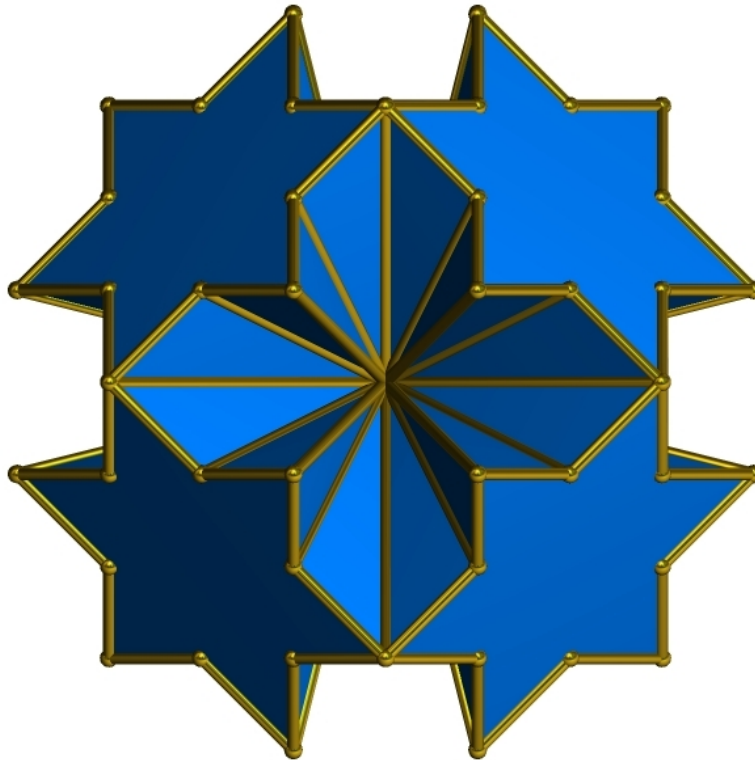


SOUL STAR Crystal Vortex Accumulator – Octagon Accommodation

This shows the SOUL STAR Crystal Vortex Accumulator in its Octahedron axis. It has an Octagon equator.

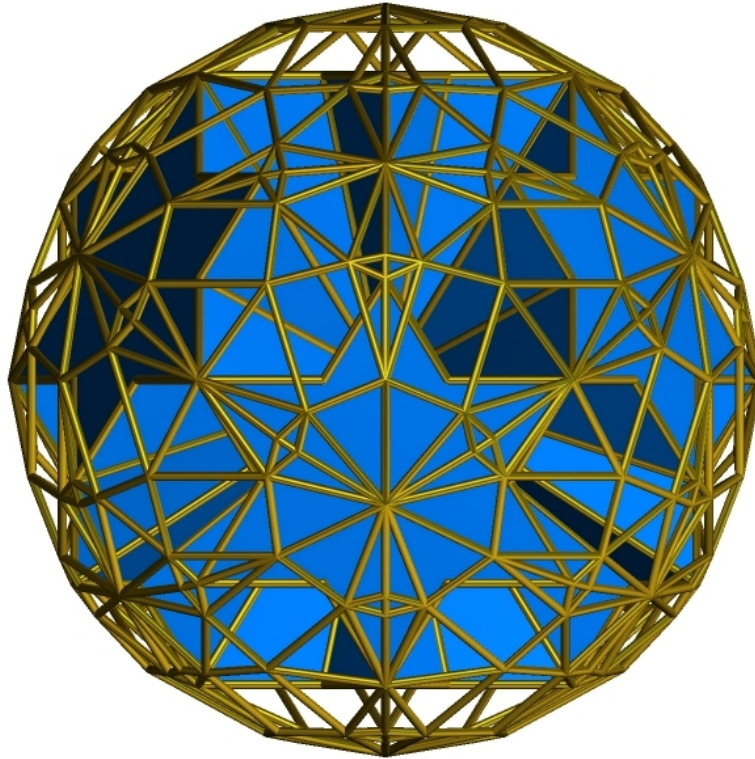


The radius of this Crystal is 250mm. It is in the Octahedron axis for Accommodation buildings.



SOUL STAR Crystal Vortex Accumulator – Dodecagon Caretaker

This shows the SOUL STAR Crystal Vortex Accumulator in its Star-tetrahedron axis for Caretaker purposes. It has a Dodecagon equator. The radius for this Crystal is 350mm.



This shows the SOUL STAR Crystal in its Star-tetrahedron axis.

